

H.264 4CH/ 8 CH/ 16 CH DVR
H.264 4CH/ 8 CH/ 16 CH/32CH NVR
H.264 IP Camera

Urmet UVS Client

USER MANUAL INSTRUCTIONS

TABLE OF CONTENTS

1	Product description	4
1.1	Important disclaimer	4
1.2	Software related filesn	4
1.2.1	Software installation directory.....	4
1.3	Application environment	4
2	System overview	5
2.1	Operation management.....	5
3	Software installing and unistalling	5
3.1	Software installing	5
3.2	Software unistalling	7
4	Description on configuration and opertion	8
4.1	Software start-up	8
4.2	Configuration	8
4.2.1	Configuration wizard.....	8
4.2.2	Add Devices	10
5	Preview screen and control panel	11
5.1	Add dvr by using DDNS or P2P	11
5.2	Control panel	14
5.3	Main view.....	15
5.4	Use multiple windows or monitors	17
5.5	Sequence mode	18
5.6	PTZ control	19
5.7	PTZ cruise	20
6	Remote playback	21
6.1	Remote playback control	22
6.2	Download video files.....	23
7	Group device management	24
7.1	Modify DVR Information	24
7.2	Delete DVR.....	25
7.3	Remote Configuration of DVR	25
7.4	Create Group	26
7.5	Modify Group	26
7.6	Delete Group	27
8	Local Log Search	28
8.1	Backup Logs.....	29
9	Account Management.....	30
9.1	Enable Password of Admin Account	30
9.2	Add User Account.....	31
9.3	Modify User Account	32
9.4	Delete User.....	32
10	File Management	33
11	Video Player	34
11.1	Play downloaded files/Cut videos/Local video files	34
11.2	Video Play Control.....	35
12	System Configuration.....	36
12.1	General	36
12.2	File	37
12.3	Alarm Sound.....	37

13 E-Map.....	38
13.1 Add E-Map.....	38
14 Local Playback.....	39
14.1 Local Playback	39
15 Local Record Schedule	40
15.1 Record Schedule.....	40
15.2 Record Setting.....	40
16 Alarm Configuration	41
16.1 Alarm Configuration.....	41

1 PRODUCT DESCRIPTION

1.1 IMPORTANT DISCLAIMER

Thank you for using Urmet UVS series products. Please carefully read the software operation manual before operation.

As the software may be updated at any time, the contents of the operation manual are subject to change without prior notice.

1.2 SOFTWARE RELATED FILES

The files for software installing, running, recording and sharpshooting are in the following folders by specific paths.

1.2.1 SOFTWARE INSTALLATION DIRECTORY

The default software installation path: C:\Program Files\Urmet\Urmet_UVS. User can define the path for installation

1.3 APPLICATION ENVIRONMENT

Requirements for system configuration:

Hardware

- CPU Intel Core 2 Duo 2.4GHZ or Higher
- RAM 2GB or higher
- VGA DirectX 9.0 compatible VGA card, NVIDIA GeForce 9500GT or higher, with video memory of 512MB or larger
- (Make sure the graphics driver provided by the computer supplier has been installed.)
- Network Card: Recommend to use gigabit NIC, (including network card, router, switch and network cables of 5e or higher specifications for RJ45 port)
- Disk Space: At least 1GB space should be available except the required space for recording.
- OS Windows:
 - XP Professional, Ultimate 32 bit or 64 bit
 - Vista Business, Enterprise, Ultimate 32 bit or 64 bit
 - Window 7 Professional, Enterprise, Ultimate 32 bit or 64 bit
 - Window 8, Window 8 professional, DirectX 9.1 or higher
- Mac OS: 10.6 or higher

Software

- Max. 100 Devices (i.e. DVR/ NVR/IP Camera) managed from each Urmet UVS PC Client.
- Max. 4 Monitors supported.
- Max. 128 live stream contemporaneously for each Monitor.
- Max. 10 streams contemporaneously in Remote Playback for 3 Urmet UVS PC Client, if the users are connected to the same DVR/ NVR/ IP Camera (Note that each Urmet UVS PC Client supports max. 4 streams in Remote Playback).
- Max. 32 streams contemporaneously in Local Playback for each Urmet UVS PC Client.
- Max. 3 PC stations (i.e. Urmet UVS Client, Internet Explorer or Mobile) or 3 users connected to the same Device (i.e. DVR/ NVR).
- Max. 5 PC stations (i.e. Urmet UVS Client, Internet Explorer or Mobile) or 5 users connected to the same IP Camera.

2 SYSTEM OVERVIEW

2.1 OPERATION MANAGEMENT

In consideration of the functions and features of the software, we strongly recommend that:

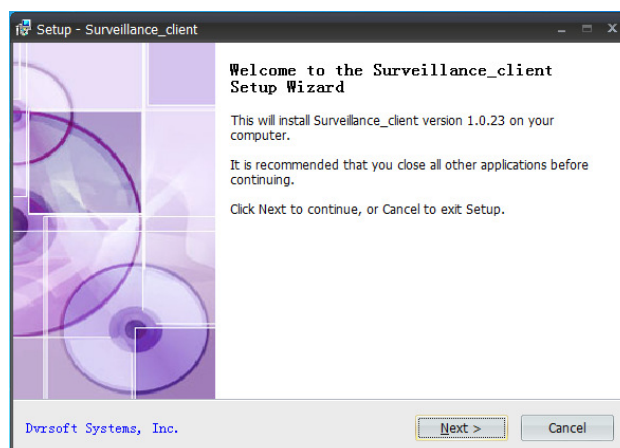
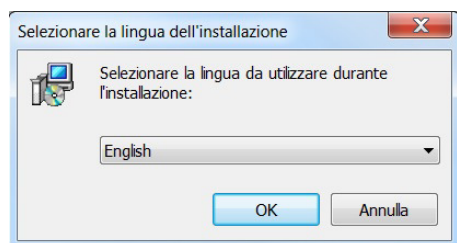
- All the operators should be trained so as to avoid forming the artificial weak point of protection system.
- Sound user management mechanism and level should be established and the low level user's access should be restricted so as to avoid the possibility of the incorrect operation.

3 SOFTWARE INSTALLING AND UNINSTALLING

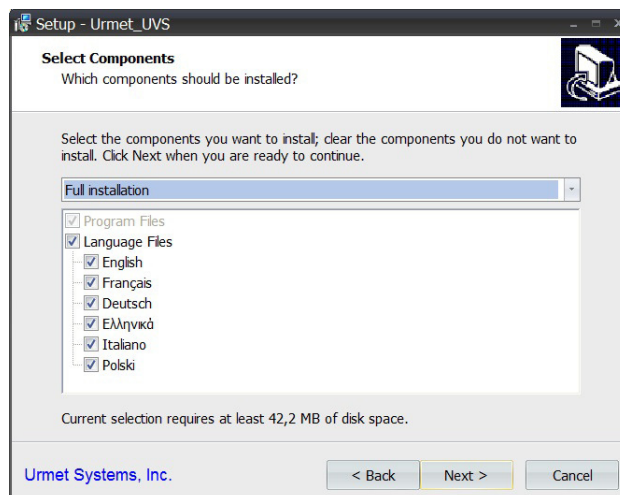
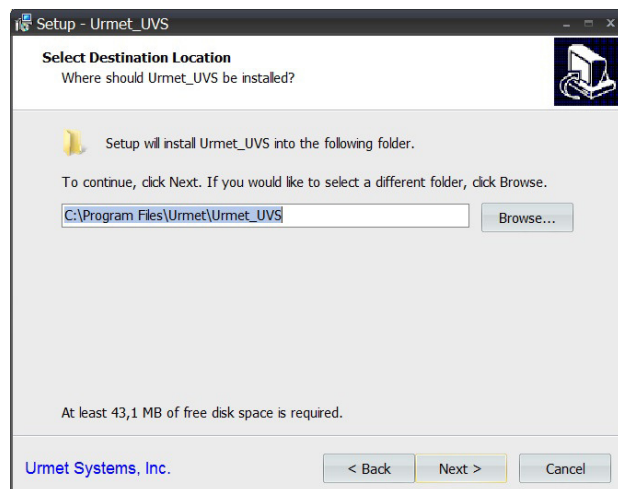
3.1 SOFTWARE INSTALLING

Double click the installation file “Urmet_UVS_VX.X.XX.XXX.exe” to install the software.

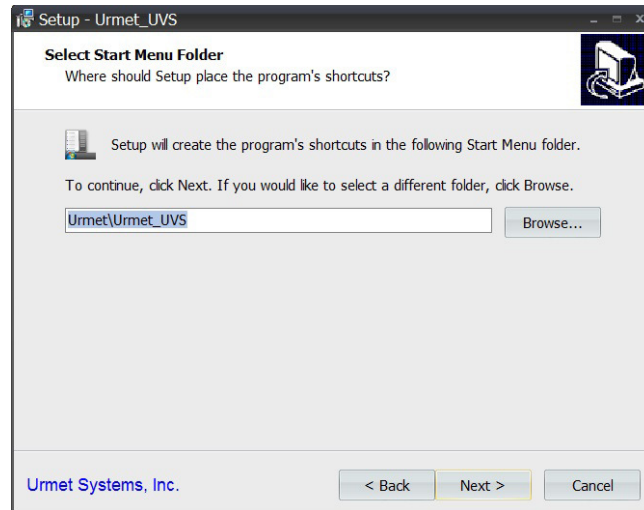
- 1 Select the language about Installation and click Next



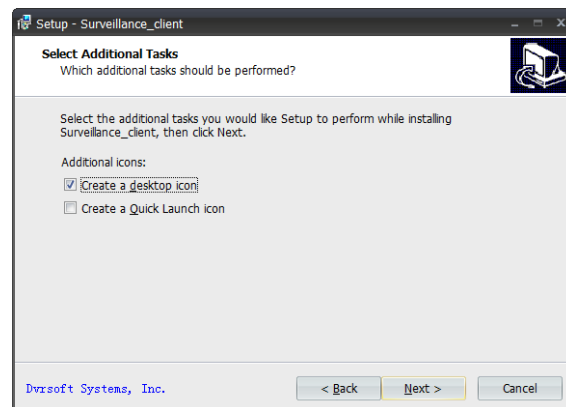
- 2 The system default installation path: System disk:\ Program Files\Urmet\Urmet_UVS. To change the installation path, please click **Browse** to customize. Confirm the installation path and then click Next.
- 3 Select the Installation Type (i.e. if you want to install all Client languages or tick the language that you want to install). Click on Next



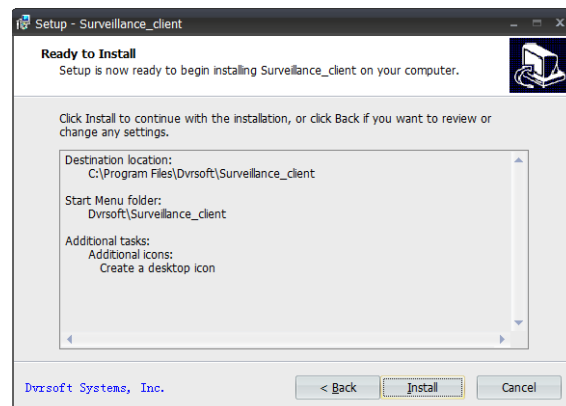
- 4 Select the folder in order to install the Client Software and click Next.



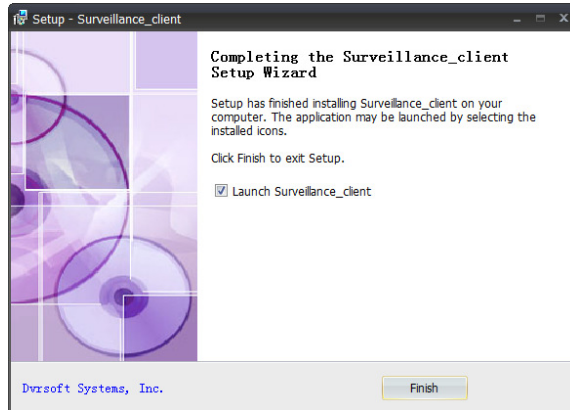
- 5 The program's shortcut will be created in the following Start Menu folder. The default installation path is Urmet\Urmet_UVS. If you want to select a different folder, please click **Browse** to customize. Confirm the installation path and then click Next.



- 6 Select the additional tasks you would like Setup to perform while installing Urmet_UVS. Additional icons:
- a. Create a desktop icon
 - b. Create a Quick Launch icon.
- 7 Click **Install** to start installation.



- 8 After software setup finished, the following window will be popped up. Click **Finish** to exit Setup.

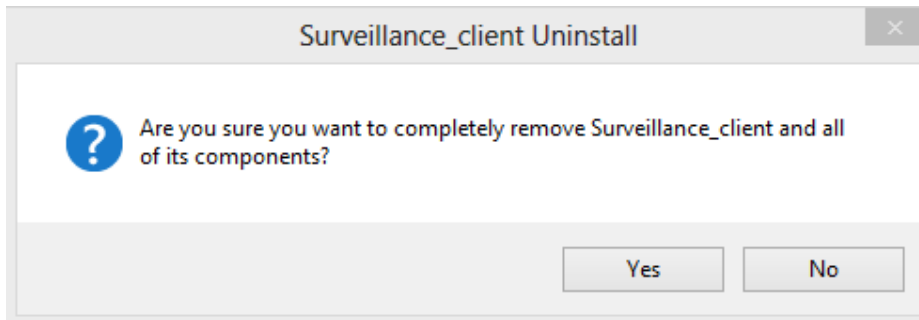


3.2 SOFTWARE UNINSTALLING

User can uninstall the software in Add and Remove Programs of the Control Panel.

User can also run the Uninstall program by the following steps:

1. Click Start button → All programs → Urmet\Urmet_UVS → Uninstall Urmet_UVS, the following window will be popped up. Click Yes.



2. System starts uninstalling the software and the process will be automatically finished.

4 DESCRIPTION ON CONFIGURATION AND OPERATION

In this chapter, we'll learn the specific operation of Urmet_UVS.

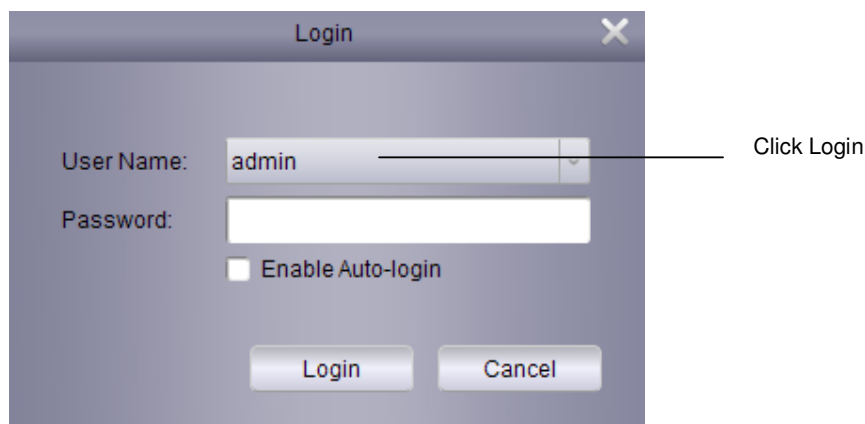
4.1 SOFTWARE START-UP

After installation is finished, a shortcut for Urmet_UVS will be generated on the desktop. Run the program by double clicking the shortcut Urmet_UVS on the desktop or click Start → All Programs → Urmet\Urmet_UVS → Urmet_UVS.

Run the software for the first time

Please start the program Urmet_UVS.

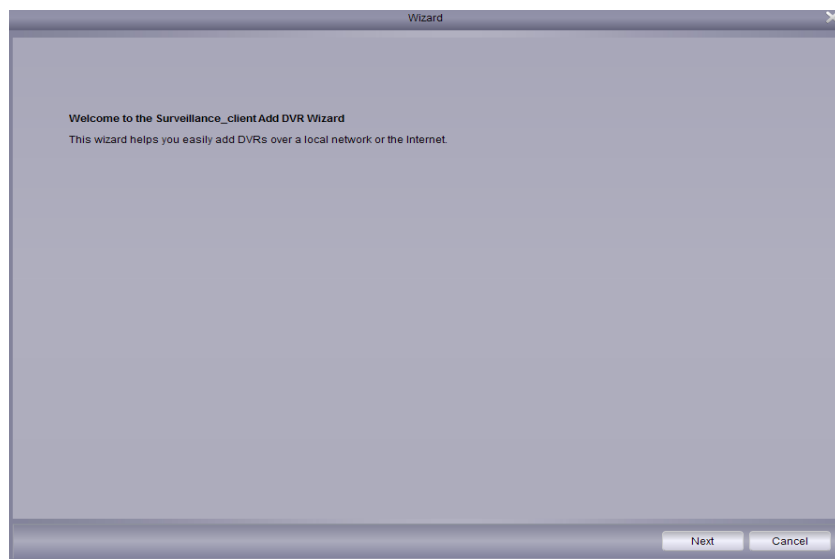
1. Click Login. No password by default.



4.2 CONFIGURATION

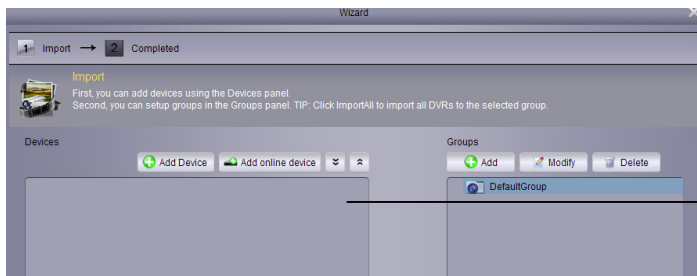
4.2.1 CONFIGURATION WIZARD

1. Run Urmet_UVS and Add Device Wizard will be opened. Click Next.

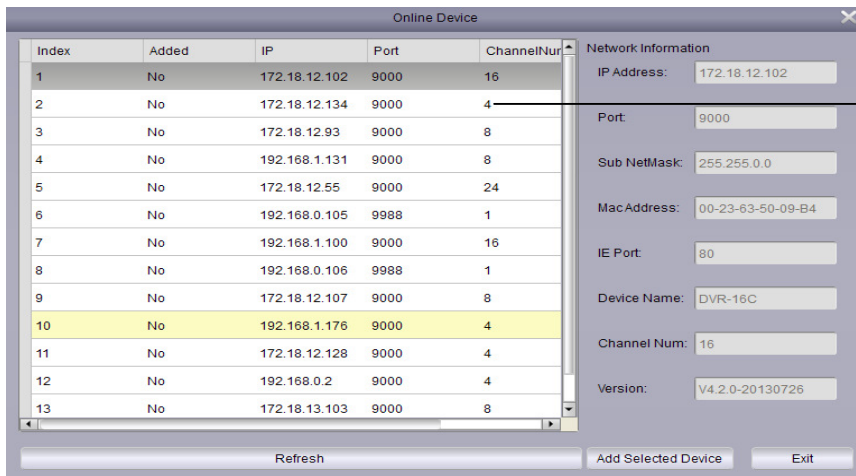


Note: If Add Device Wizard is not opened, please single click Help to manually open it.

2. Click Add Online Device and the client software will scan all the online network DVRs in LAN.



3. Click a DVR in the list and the added devices, IP address, port and channel number will be displayed. Click Add Selected Device to add.



Note If your DVR is not available in the list, click Exit and then click add to manually input the IP address of DVR.


4 Input the name of the selected DVR in Device Name field, e.g. home, office, etc.

5 Input user name in User Name field (default name is admin)

6 Input password in Password field. The password field is blank by default. You may change the login password of DVR.

4.2.2 ADD DEVICES

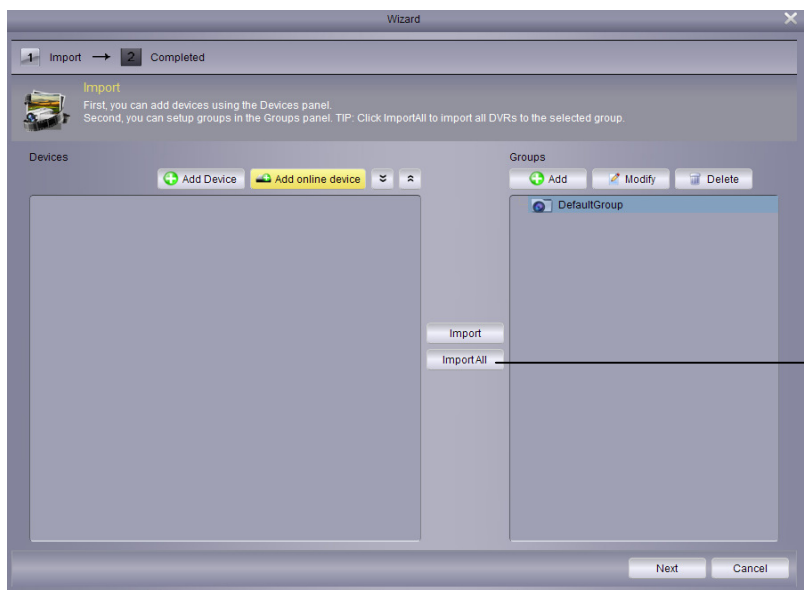
1 Click Add.



The 'Add Device' dialog box contains the following fields and controls:

- Device Name:** A text input field containing 'D3308'. A label points to this field with the text 'Input the name of your DVR'.
- IP Address:** A text input field containing '172.18.12.134'.
- Port:** A text input field containing '9000'.
- User Name:** A text input field containing 'admin'. A label points to this field with the text 'Input user name (admin by default)'.
- Password:** A text input field. A label points to this field with the text 'Input password if the password verification is activated.'
- Channels:** A text input field containing '4'.
- Buttons:** 'Add' and 'Cancel' buttons at the bottom. A label points to the 'Add' button with the text 'Click Add'.

2 Click ImportAll to import all DVRs to the default group.



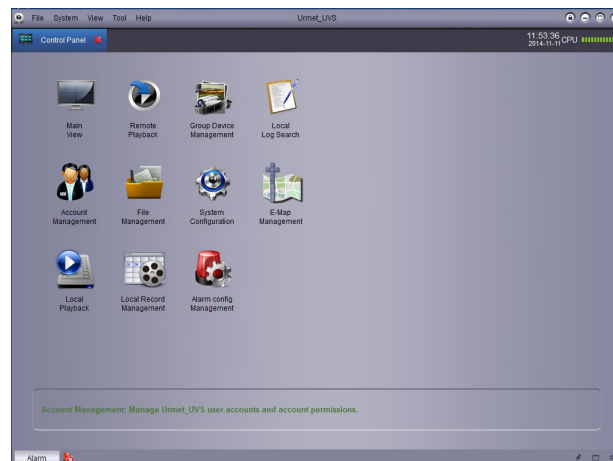
The 'Wizard' dialog box shows the 'Completed' step of the 'Import' process. It contains the following elements:

- Progress Bar:** Shows '1 Import' and '2 Completed'.
- Import Section:** Includes a small icon and text: 'First, you can add devices using the Devices panel. Second, you can setup groups in the Groups panel. TIP: Click ImportAll to import all DVRs to the selected group.'
- Devices Panel:** Contains buttons for 'Add Device' and 'Add online device'.
- Groups Panel:** Contains buttons for 'Add', 'Modify', and 'Delete'. Below these buttons is a list box showing 'DefaultGroup'.
- Buttons:** 'Import' and 'ImportAll' buttons are located between the Devices and Groups panels. A label points to the 'ImportAll' button with the text 'Click ImportAll'.
- Footer:** Contains 'Next' and 'Cancel' buttons.

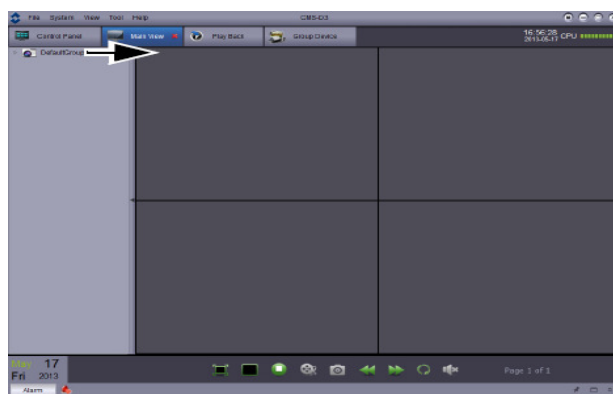
3 Click Next and then click Finish to complete the wizard.

5 PREVIEW SCREEN AND CONTROL PANEL

Click Main View



2. The following window will be displayed.



5.1 ADD DVR BY USING DDNS OR P2P

If DVRs use dynamic domain names, you may add them into Urmet_UVS Client.

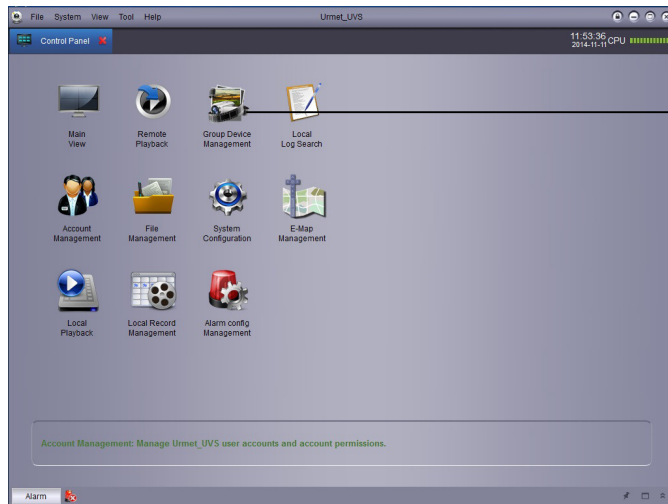
In order to use DDNS Account:

- Create a DDNS account.
- Enter domain information and enter DVR local.
- Map the port to the router.

In order to use P2P Account:

- Take the note about ID P2P on case of device.
- Enter domain information and enter DVR local.

1. Select 'Control Panel' option and click the Group Device Management.



Click Group Device Management

2. Click Add Device.

3. Configuration:

Input the name of your DVR

Input IP address or ID Device

Input the port of the client (Default value: 9000)

Input user name (admin by default)

Input password (default: blank)

Click Add

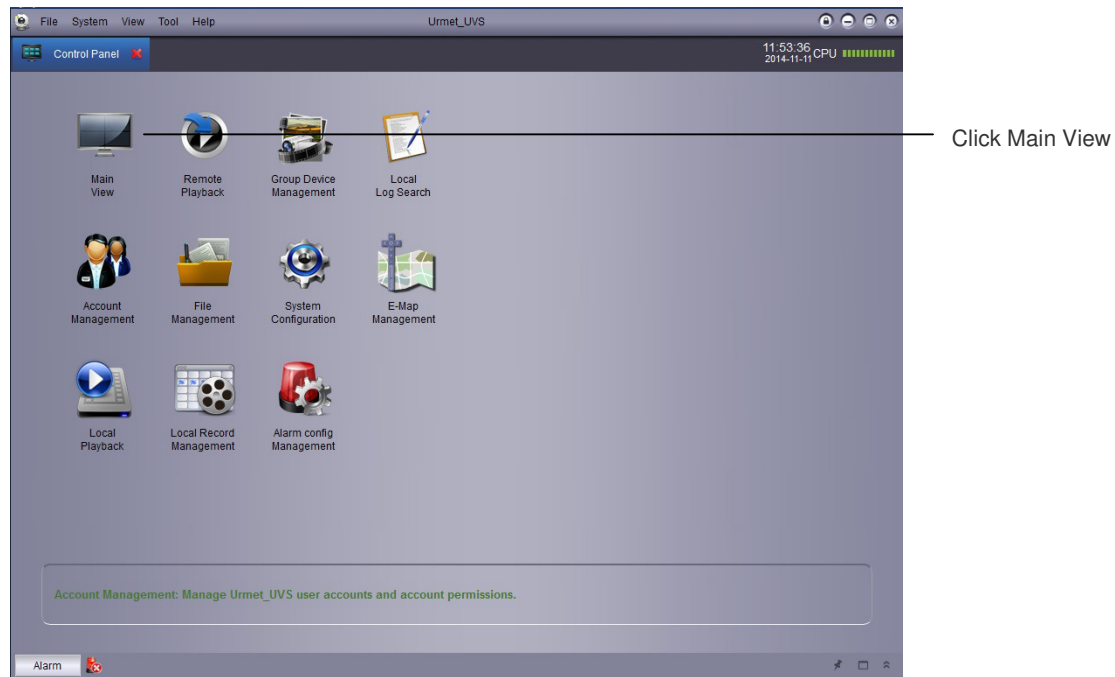
- Device Name: Input the name of your DVR, e.g. home, office, etc.
- IP Address: Input domain name or Urmet DDNS ID or P2P ID(P2P ID is present on case of device or in **System -> Info** Menu Device) , for example, ddvrr. 3322.org.
- Port: Input the client port of DVR (Default: 9000) .
- User Name: Input user name (admin by default).
- Password: Input password. The password field is blank by default unless the password verification has been activated for DVR.

4. Click Add.

- 5 Click import all to import all DVRs to the default group.

- 6 Click 'Control Panel' option.

7 Click Main View.



8. Click and drag it to the default group in the displayed window.

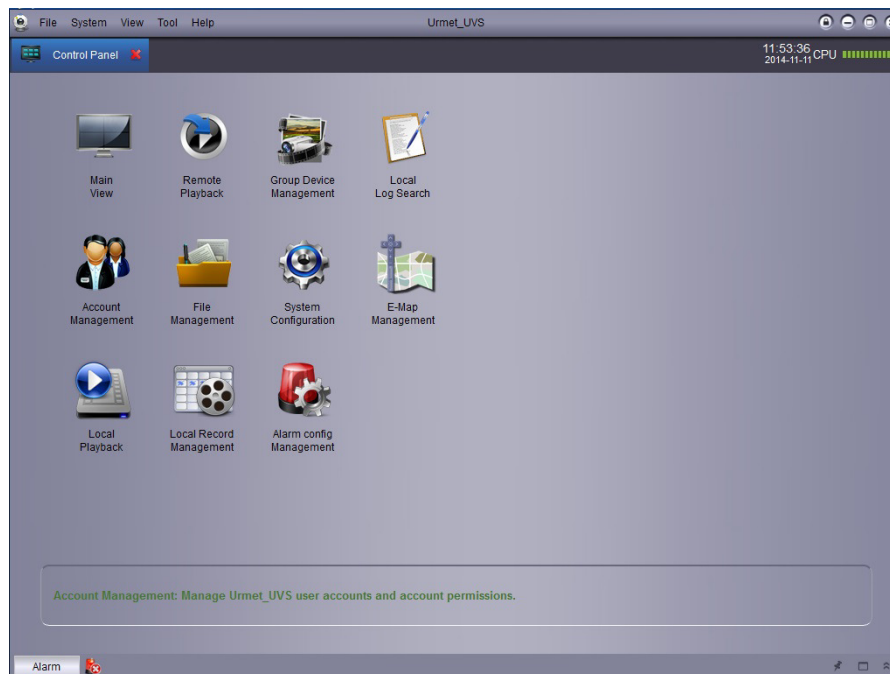


Result



5.2 CONTROL PANEL

You may access to your DVR through control panel to preview and playback the videos. You can also open control panel and click the control panel option at any time.

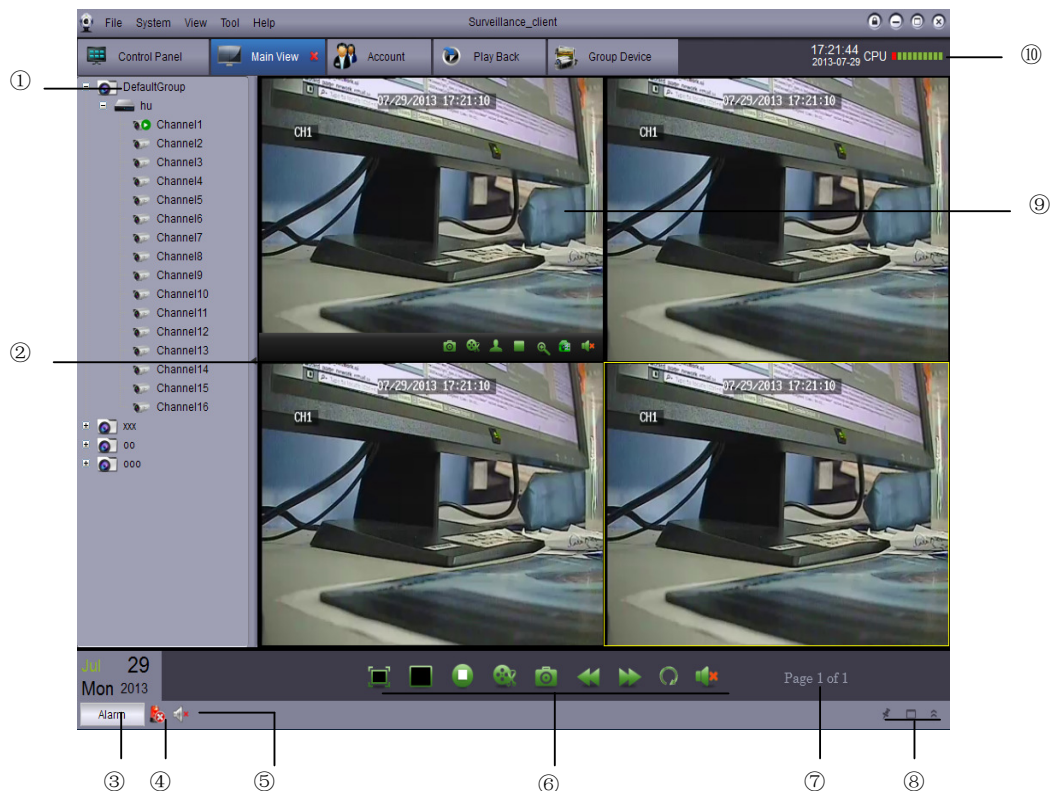


The following options can be found in the Control Panel



- Main View: Remotely preview the videos. Refer to 5.3 Main View for details.
- Remote Playback: Play the recorded videos in the DVR. Refer 6. Remote Playback for details.
- Group Device Management: Manage DVRs and camera groups. Remotely control the DVR configuration. Refer to Group Device Management for details.
- Local Log Search: Search log of DVR. Refer to Local Log Search for details.
- Account Management: Set up the account and password for the client software. Refer to Account Management for details.
- File Management: View and management the snapshots and recorded files. Refer to File Management for details.
- System Configuration: Configure Urmet_UVS. Refer to System Management for details.
- E-Map Management: Manage the E-Map with Camera and events detected (i.e. Motion Detection, Video Loss, I/O Alarm)
- Local Playback: Manage up to 32 video channels playback simultaneously from PC Hard Disk.
- Local Record Management: Set the record settings of configured devices on PC Hard Disk.
- Alarm config management: Enable/Disable the alarm settings (Screenshot alarm, pop-up alarm, record alarm etc.) for different events (Motion Detection, Video Loss, I/O alarm)




5.3 MAIN VIEW

User may preview the videos in Main View. To access to Main View, enter Control Panel and click Main View ()



1. DVR List: Display all DVRs and camera groups connecting to the client software.

- Camera group is indicated by the icon  and DVR is indicated by the icon 
- Icons related to DVR:

	Camera is online
	Preview the camera video
	Camera is offline (connection problem)












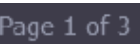




- Click and drag the camera, camera group or show grid to open.

Tip: You may click and drag the camera and create customized view from different DVRs.

2. Hide the list of DVR/Camera: Click the arrow to hide/display DVR list.
3. Alarms: Click alarm panel and the system alarm list and events, e.g. motion detection event, will be displayed on the screen.



Alarm Time	Group Name	Device Name	Channel	Alarm Type	Information
2013-05-21 14:10:27	DefaultGroup	DVR	Channel3	Motion Detection	Motion Begin
2013-05-21 14:10:24	DefaultGroup	DVR	Channel6	Motion Detection	Motion End
2013-05-21 14:10:24	DefaultGroup	DVR	Channel9	Motion Detection	Motion End
2013-05-21 14:10:05	DefaultGroup	DVR	Channel7	Motion Detection	Motion Begin
2013-05-21 14:10:05	DefaultGroup	DVR	Channel8	Motion Detection	Motion Begin
2013-05-21 14:10:05	DefaultGroup	DVR	Channel5	Motion Detection	Motion Begin






☒ Motion Detection
 ☒ Video Exception
 ☒ Alarm I/O

4. Remove alarms  Click to remove all the alarms in the list.
5. Mute alarming sound  Click to enable mute or cancel mute. Set the alarming sound.
6. Toolbar of the Main View : 
 - Full screen display  Click to enable full screen display and press ESC to exit.
 - Selecting a layout  : Split screen mode selection key
 - Stop status display  : Click to stop all channel previews.
 - Screenshot  : Click to save the screenshot of the current channel.
 - Cut videos  Click to start/stop cutting currently selected channel video.
 - Previous/Next  : Click to go to previous page or next page.
 - Sequence  : Click to configure sequence mode.
 - Audio  Audio ON/OFF
7. Page  multiple cameras are opened, the screen is split to form multi-screen display window and many pages are formed. The number of current page and total page is displayed on the bottom of the screen.
8. Alarm Control Panel : 
 -  Auto-hide: Click to enable/disable the auto-hide function of alarm panel.
 -  Maximize the alarm panel: Maximize the alarm panel in the tab page.
 -  Display/hide alarm panel.
9. Camera Display : Select a channel and put the cursor on the toolbar of the channel. The toolbar contains the following options:



Click a channel to open toolbar.

- Cut videos  : Click to start or stop cutting the currently selected channel video.
- Screenshot  : Click to save the screenshot of the current channel.

- PTZ : Click to use PTZ control. Refer to [PTZ Control](#) for details.
- Stop Video  Click to stop the current channel video.
- Digital Zoom  Click to use digital zoom mode.
- Color setting  Open the color setting menu of the current camera.
- Mute : Mute/unmute the current preview video.

10. CPU status : Display CPU utilization.

5.4 USE MULTIPLE WINDOWS OR MONITORS

Create multiple tab pages of preview video windows. Customize the preview video windows as required (4 tab pages can be opened at most).

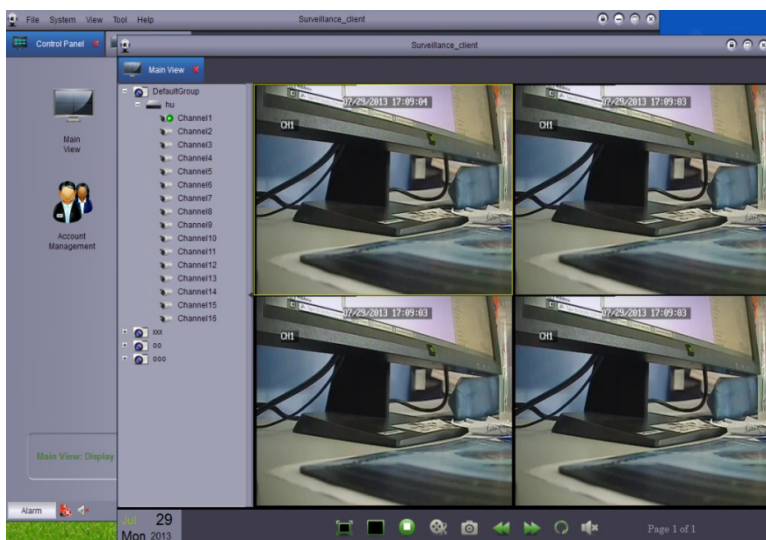
Open multiple windows:

Click preview tab page and drag it out of the main window to create the 2nd display window.



Click and drag it out of the main window.

Result:




Open multiple tab pages. You can monitor different videos from multiple monitors.

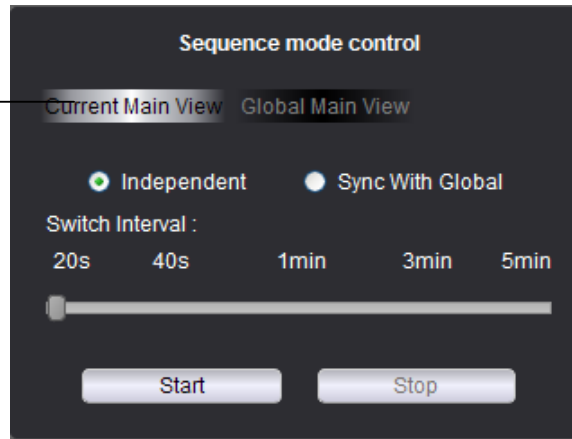
5.5 SEQUENCE MODE

When Sequence Mode is enabled, the main view will be in automatic cycle mode in setting time. You may set sequence mode for one or all preview video window.

Use Sequence Mode:

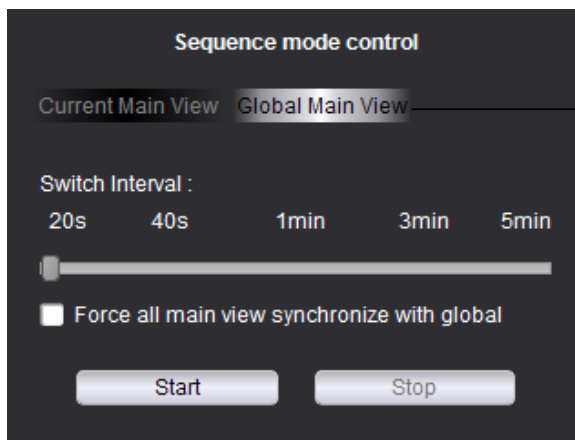
1. Click  to enable sequence mode control.
2. If you want to use Sequence Mode in current window, click Current Main View and select 'Independent' or 'Sync With Global' to perform independent sequence for current window or synchronize with other windows in the same time interval.

Click 'Current Main View' to use Sequence Mode for current window.



or

If you want to use Sequence Mode in all windows, click 'Global Main View'. All main view windows which are selected 'sync with global' will be in synchronized sequence mode. If 'Force all main view synchronize with global' is selected, all main view windows will be forced to sequence in the same time interval.




Click 'Global Main View' to use Sequence Mode in all windows

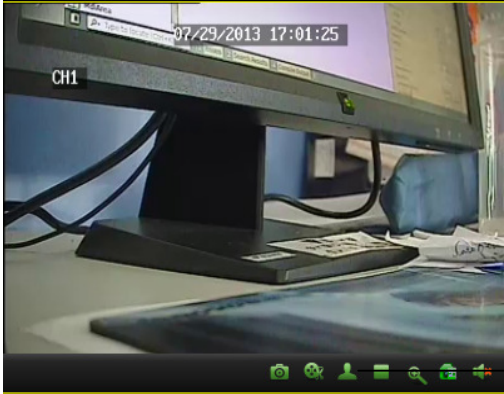
3. Use slider to set the Switch Interval (dwell time).
4. Click to start sequence mode.

If you have a PTZ camera, you may perform remote control by using software.

Note: Before remote control of PTZ, please make sure the relevant parameters of PTZ hve been set in DVR. Refer to operation manual of DVR for the detailed setting of PTZ.

PTZ Camera Control

- 1. In Main View, put cursor on PTZ camera and the toolbar will appear. Click to  open PTZ control.



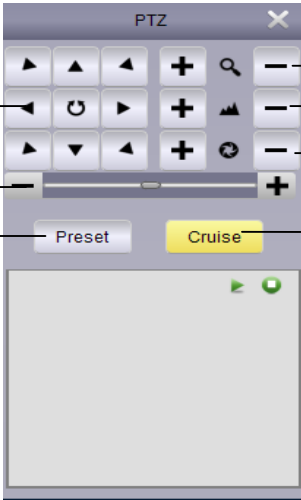
Open PTZ control

PTZ Control

Use cursor to control the position of camera

Adjust PTZ speed

Configure/Call preset point



PTZ

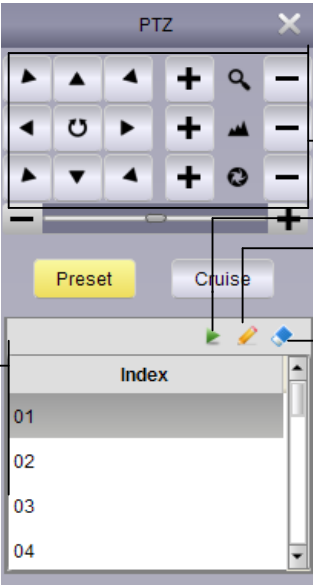
Adjust the zoom

Adjust the focus

Adjust the aperture

Start/Stop PTZ Cruise

Select preset number



PTZ

Set PTZ position

Call preset point

Set preset point



Delete preset point

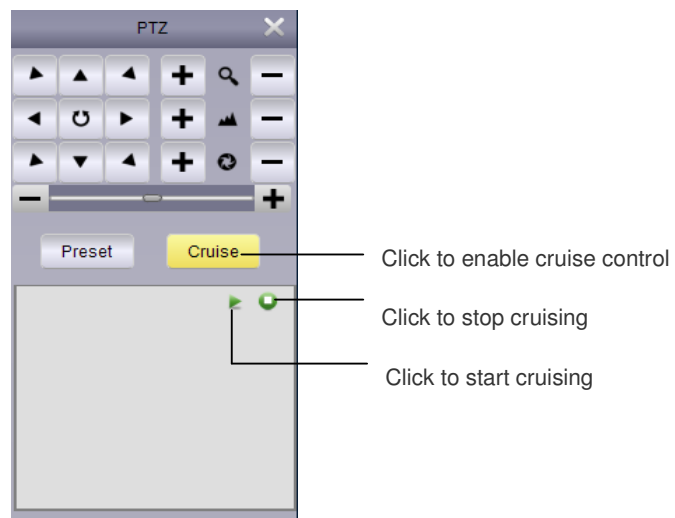
5.7 PTZ CRUISE

When PTZ cruise is enabled, PTZ will start cruising through saved preset point. Set more than two preset points and cruising can be started.

Start/Stop PTZ cruise.

1. Click Cruise.

2 Click  to start PTZ cruise and click  to stop PTZ cruise.



6 REMOTE PLAYBACK

User can view the audios and videos recorded by DVR in the computer through remote playback.

Remote Playback


1 Click remote control  on the control panel.

2. Select the video channel for remote playback.

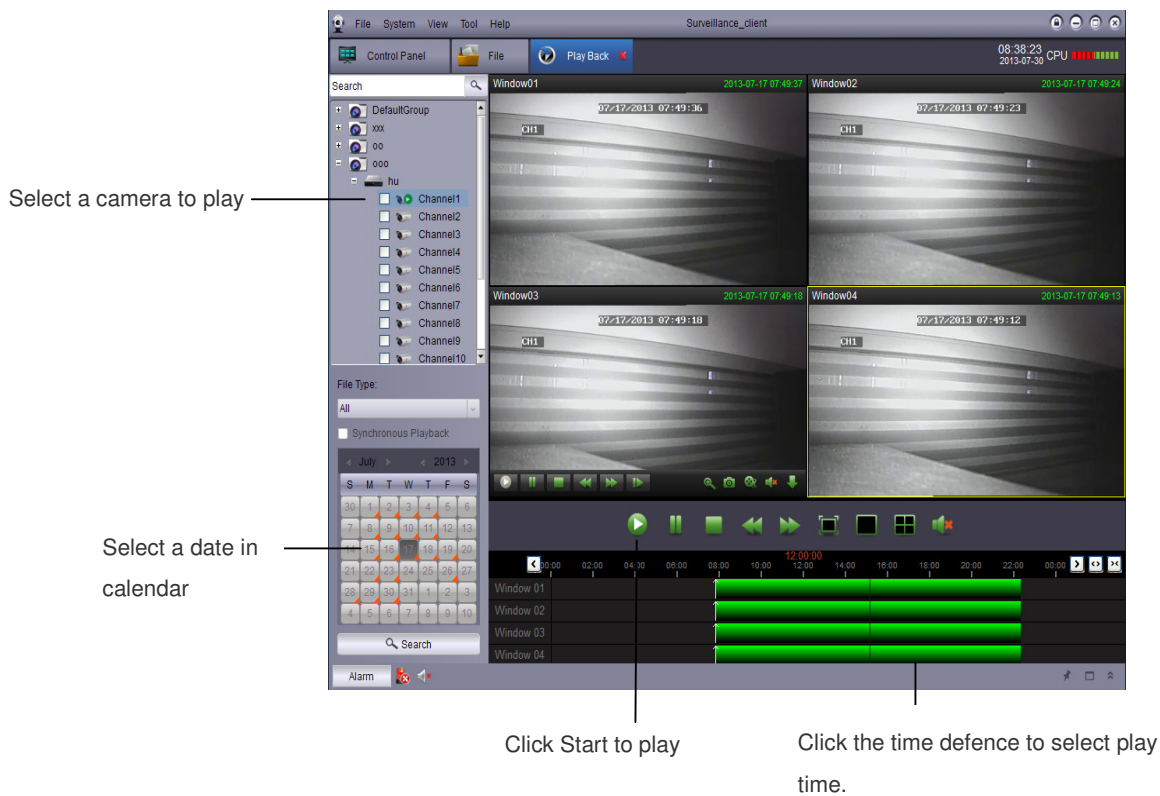
3. Playback can be done in 4 channels at the same time.

4. Select playback in calendar. The red triangle icon indicates that there is video available for playback.

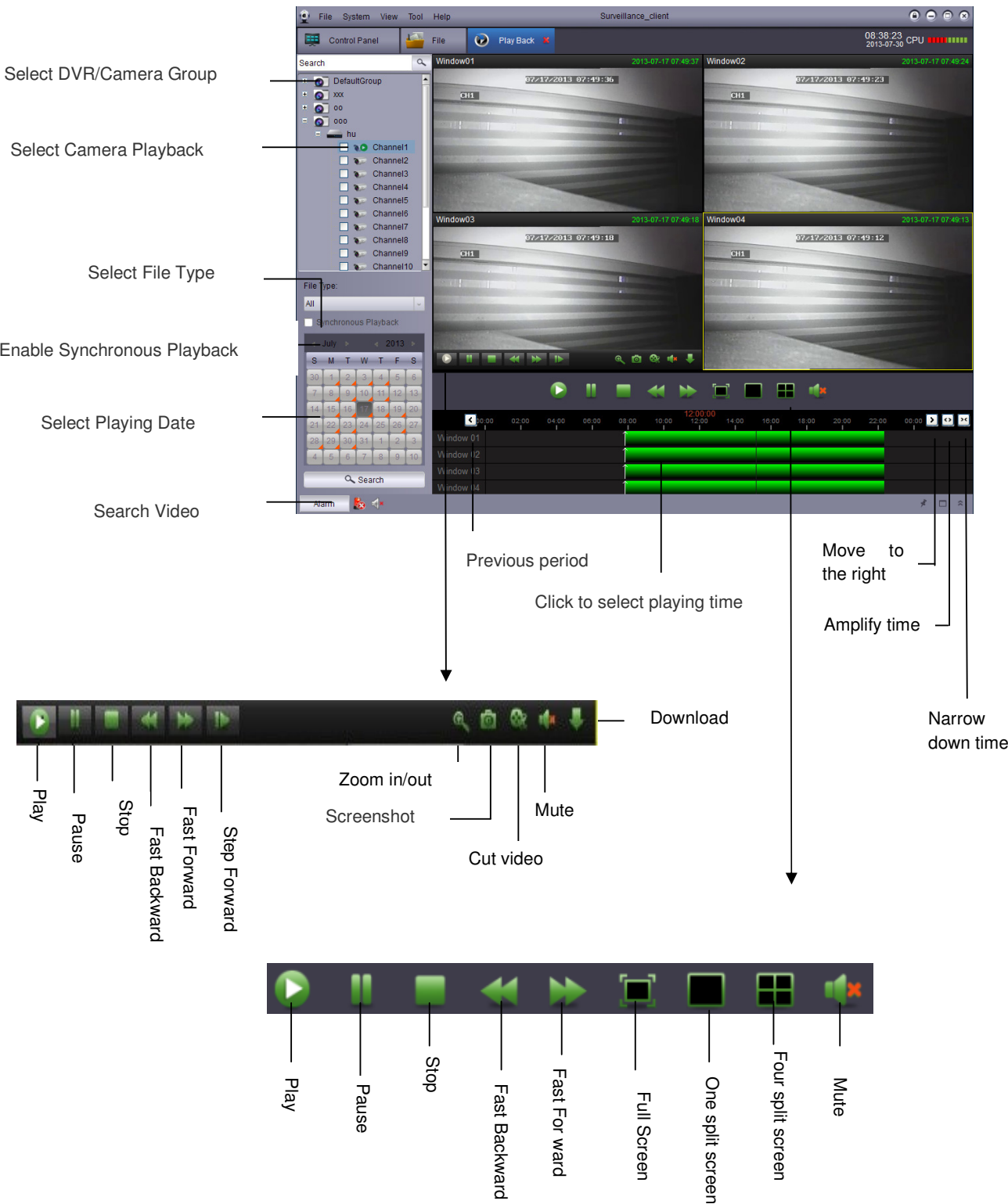
5 Click Search to show the current videos of DVR.

6 Click  to play the selected event.

7Click to select play time in time fence.



6.1 REMOTE PLAYBACK CONTROL

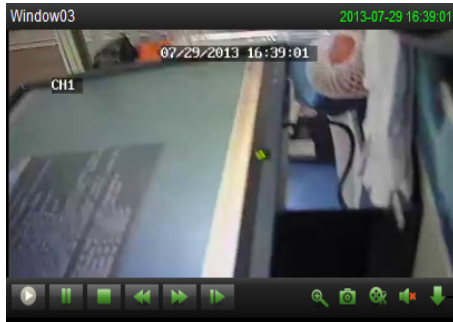


6.2 DOWNLOAD VIDEO FILES

DVR video files can be remotely downloaded.

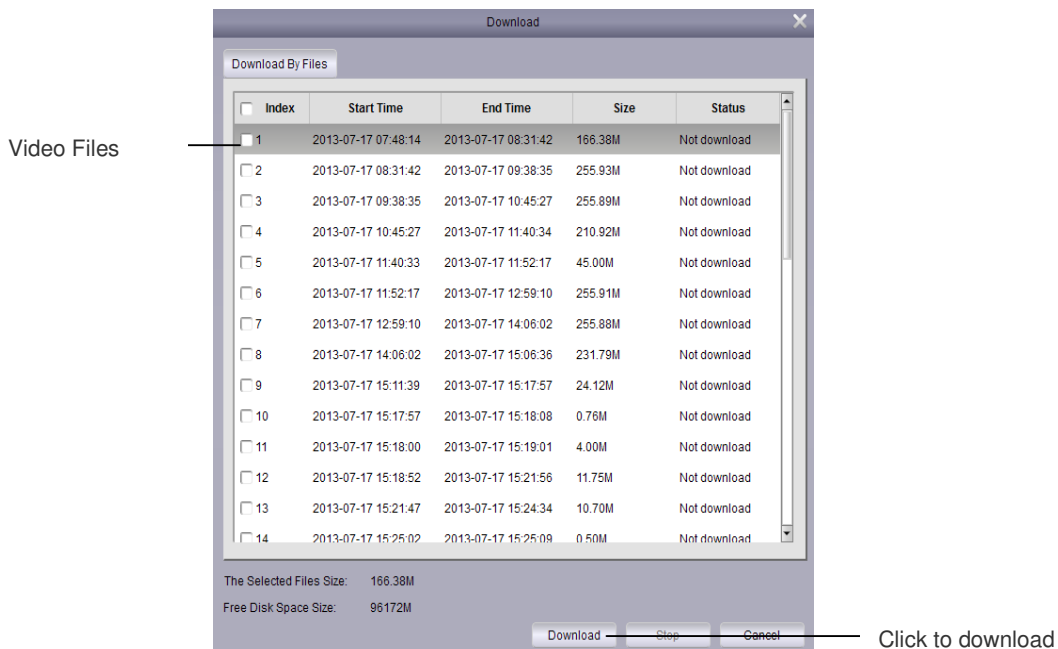
Download video files:

1. Put cursor on the video and click  to open download menu.



Click to open the download menu.
Select Playing Date

2. Select a file and click Download. Wait seconds and the download will be started.

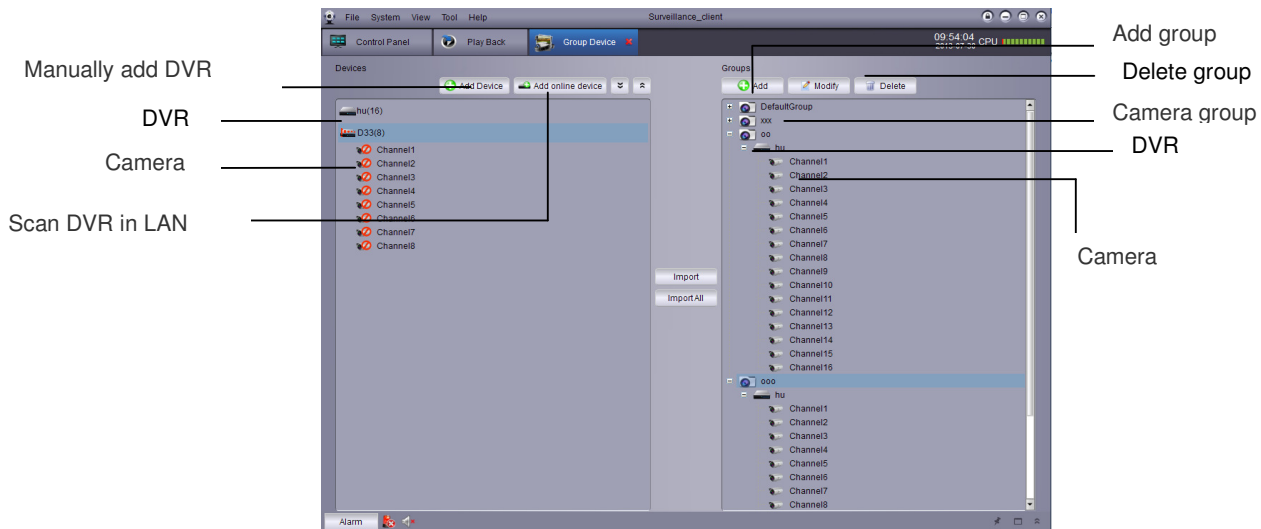


Video file format is .264. Video player is internally installed in Urmet_UVS. If you want to convert .264 to AVI, please use AVIGenerator on the attached CD.

7 GROUP DEVICE MANAGEMENT

Group Device Management Menu is used for managing DVR and camera group.


The device panel on the left allows you to add, modify and delete DVR system and remotely control DVR device. You can set up camera group by the group panel on the right. Import the channels from device panel into group panel to access the videos or playback. You can select different channels from multiple devices to a group. The defaultgroup is created by default. You may create new group as required.

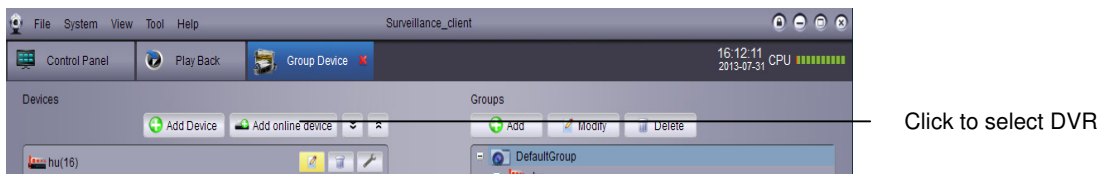


7.1 MODIFY DVR INFORMATION

User can modify the name of DVR and delete DVR or camera from group.

Modify DVR information:

1 In the device list, left click DVR to be modified and then click 




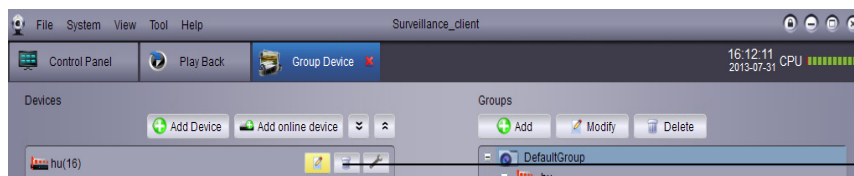
9 Modify DVR information and save.

7.2 DELETE DVR

You may delete DVR from Urmet_UVS.

Delete DVR

Click to select DVR to be deleted and then click  and save to delete DVR.




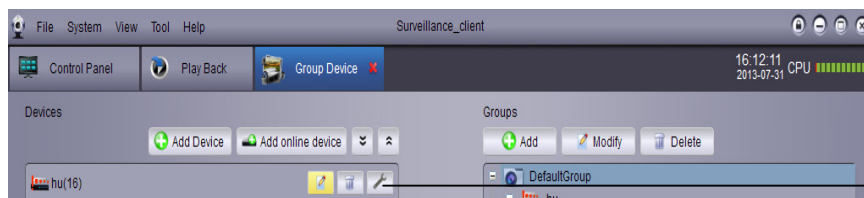
Click DVR to be deleted

7.3 REMOTE CONFIGURATION OF DVR

You may remotely configure DVR parameters by software.

Remotely configure DVR

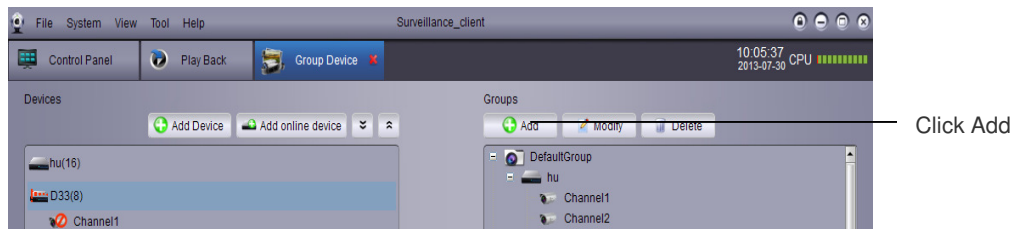
- Click  to set parameters. Refer operation manual for details.



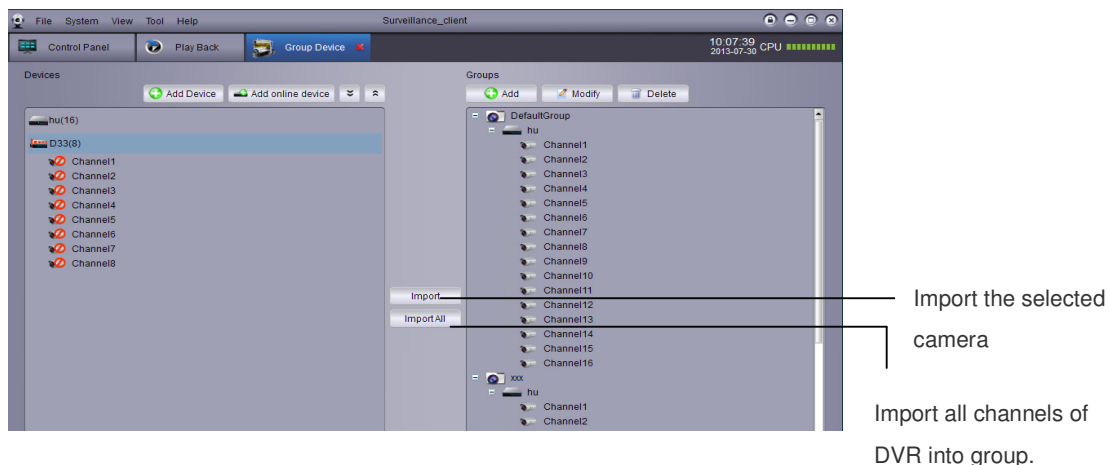
Click to configure the parameters of DVR.

7.4 CREATE GROUP

1. Click Add. Input a customized name and then click Yes to confirm.



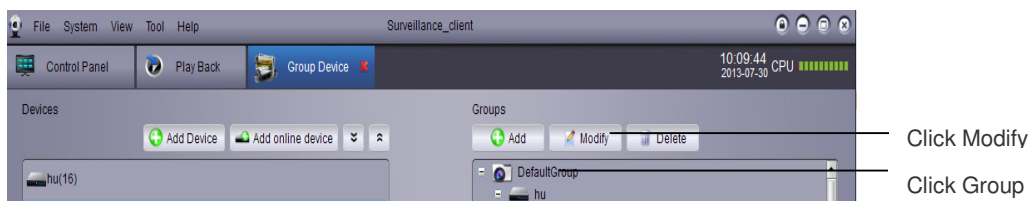
2. Import DVR channel to group. Select DVR or camera to be imported in the left list to import them to the selected group.



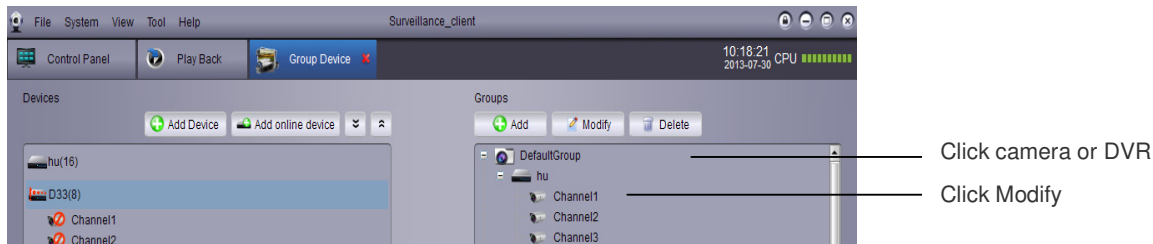
7.5 MODIFY GROUP

Modify group name/Delete DVR or camera from group.

1. Click group name and then click Modify. Input name to be modified in the pop-up box and save by clicking Yes.



2. Click the name of DVR/camera and click Modify. Input the name to modified in the pop-up box and save by clicking Yes.

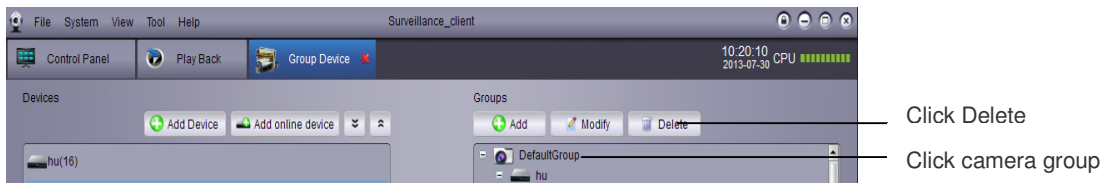


7.6 DELETE GROUP

Delete the name of Group/DVR/Camera

1 Click Group/DVR/Camera.

2 Click Delete and then click Yes to confirm.

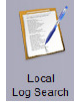


- Click camera group and click Delete. Click Yes to confirm.

8 LOCAL LOG SEARCH

'Local Log Search' refers to searching the log of Urmet_UVS. Defaultly it can search one week's log. User may define the log reservation time as one month. Refer to system setting for details.

Search log



1 Click Local Log Search the Control Panel.

2 Set the following search options

- User Name: Select 'All Users' to search logs created by all users, or select 'Specific User' to view his log.
- Log Type: Alarm log records motion detection alarms and system alarms. Operation log records configuration change or access of system users to log system (such as login and logout)
- All Type: Select to search logs of all type or specific type.
- Group: Select DVR or Camera group to search desired logs or select All Groups to search logs of all DVRs and camera groups.
- Start Time/End Time: Select start time or end time of searching.

3. Click Search and all logs meeting search conditions will be displayed in the list.

Set searching
parameters

Click Search

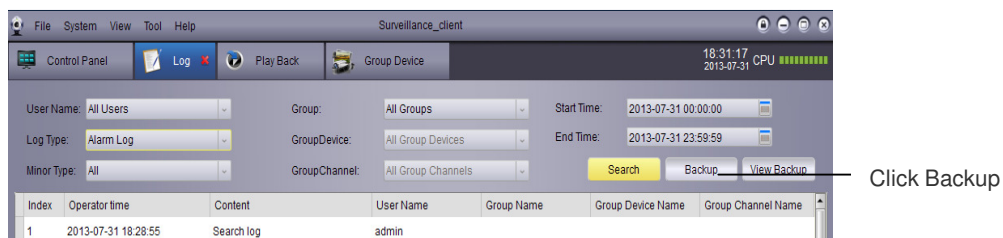
8.1 BACKUP LOGS

User can back up the log search result in the hard disk or view backup log.

Backup log

1 Search log by following above steps.

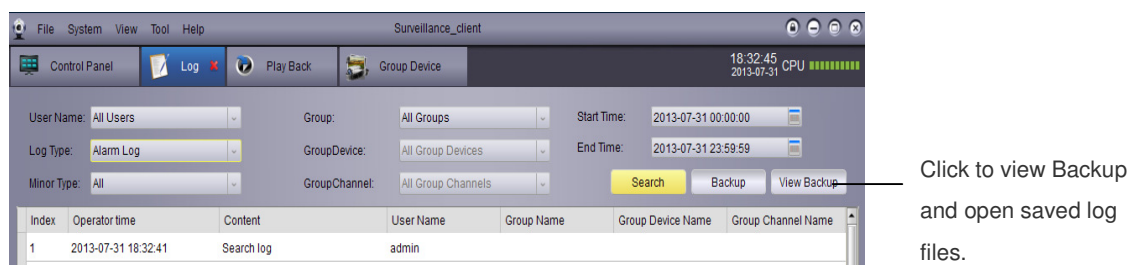
2 Click Backup



3 Select a folder and input a file name and then click Save.

Open saved log file

1. Click to view backup.



2. Select log file and click Open.

9 ACCOUNT MANAGEMENT

User may use Account Management menu to create Urmet_UVS user account.

The client software includes the following user types:

- **Admin:** When you firstly run the client software, the default account is admin. The administrator has the privilege to operate client software and remotely configure DVR parameters. The administrator can add, modify or delete any other user accounts.
- **User:** It is standard user account. User's privileges are assigned by administrator. User cannot change software setting or change other user account. User can change his own password.

Visit Account Management

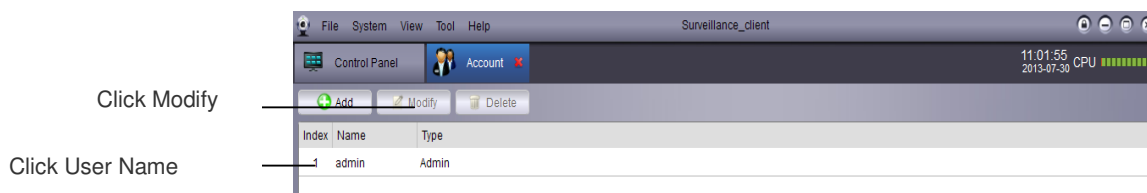
- Click Account Management  on the Control Panel.

9.1 ENABLE PASSWORD OF ADMIN ACCOUNT

The password for admin account is blank by default. No password input is needed to log in Urmet_UVS. If password is set for admin account, operator has to input password to log in the client.


Create password for admin account.

1. To login with admin account, please click admin account and then click Modify.



- 2 Input password for admin account and repeat inputting to confirm.

- 3 Click Save to save password.

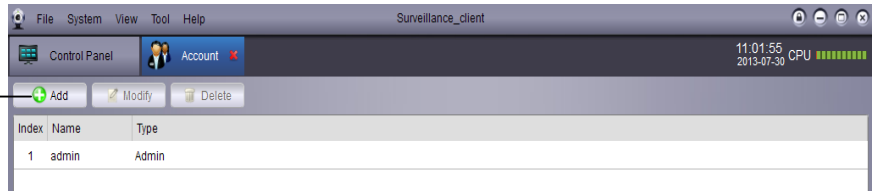
Note: Click  to lock Urmet_UVS and user should input password for administrator. Or the user can click System > Change user to user other user account to login. Please note that admin account does not logout until another account login.

9.2 ADD USER ACCOUNT

Note Only administrator is allowed to create new user account.

1 Click Add

Click Add

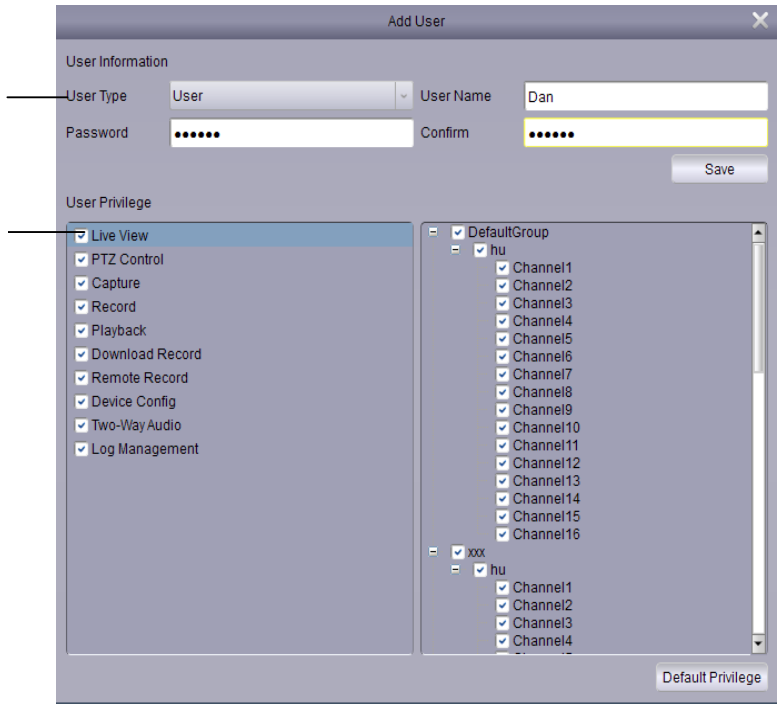


2 Configuration

- Input password for user account and repeat inputting to confirm.
- Select privileges for the user account on the bottom area.

Set User Type and Password

Select user Privilege



3 Click Save to create user account.

9.3 MODIFY USER ACCOUNT

1. Click the account to be modified and click Modify.



- 2 Edit the settings and privileges of common users and click Save.

Note Common users can only modify his own password while administrator can modify the password or privileges of any user.

9.4 DELETE USER

- Click user you want to delete and click Delete and click Yes to confirm.

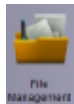


Note: Only administrator can delete common user.

10 FILE MANAGEMENT

Use file management to view local videos and screenshots.

Use file management



1. Click file management on the Control Panel.

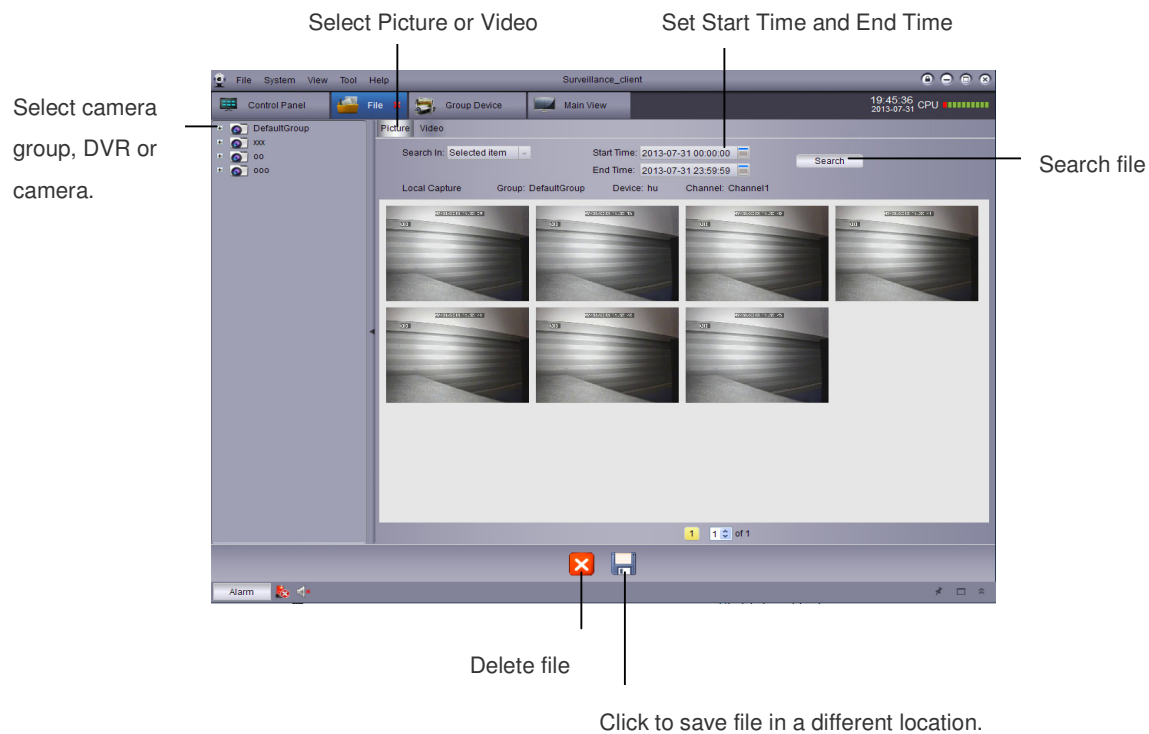
2. Select the camera or DVR you want to search on the left of the screen.

3 Click Video to search manual videos or click Picture to search screenshot.

4 Set start time and end time. Time period for cutting videos and pictures is for recording original videos, not for saving files.

5 Click to search files.

6 Double click to open files or use button on the bottom of the screen to delete or save files in your computer.

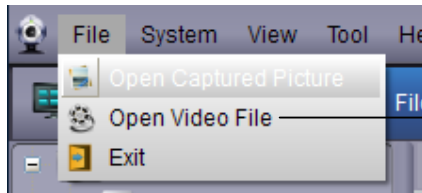


11 VIDEO PLAYER


Video player can play downloaded files/ cut videos/ local video files.

11.1 PLAY DOWNLOADED FILES/CUT VIDEOS/LOCAL VIDEO FILES

1. Click File>Open Video File. The video player will be opened.



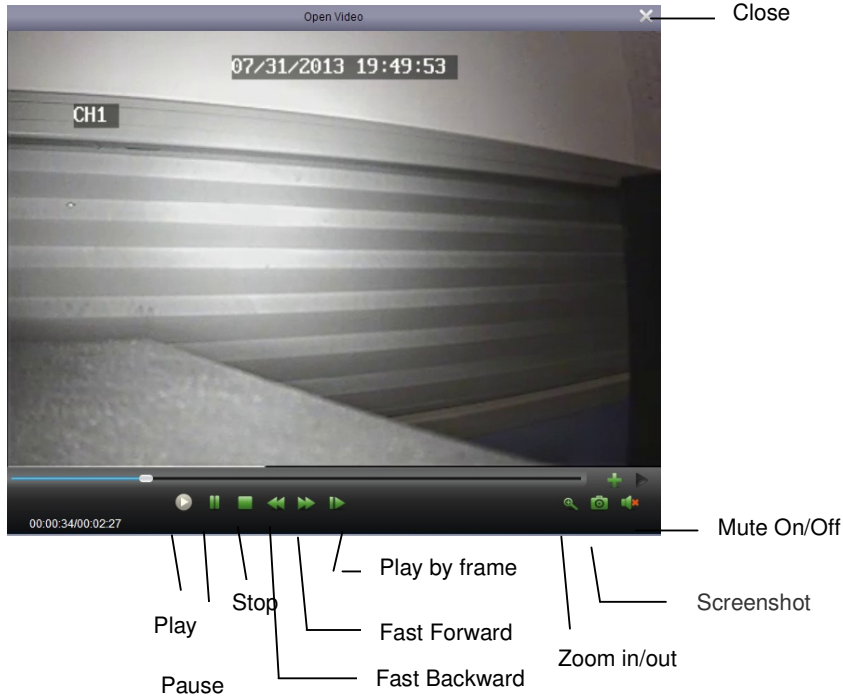
Click File>Open Video File

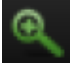
2. Click  and select the video file and click Open to play the video file.



Click to open a video file.

11.2 VIDEO PLAY CONTROL




- Zoom in: click  and then click and drag on the picture, and click again to zoom in.

12 SYSTEM CONFIGURATION

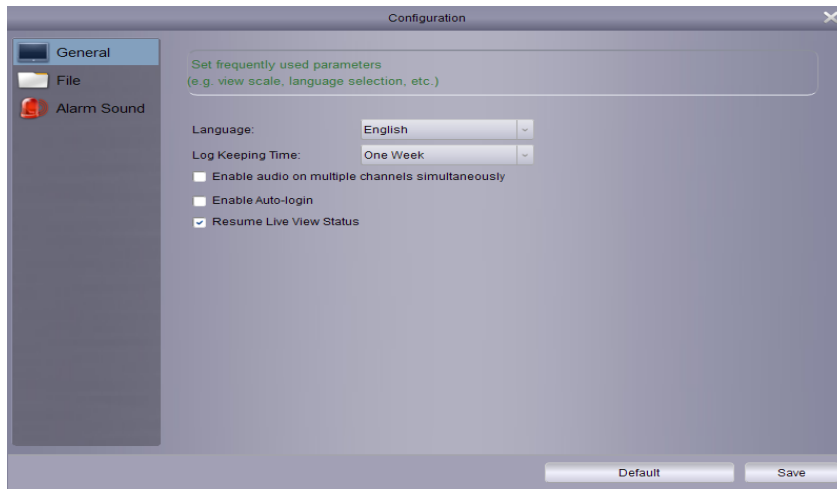
System configuration is used for configuring Urmet_UVS.

System configuration

- Click system configuration  on the Control Panel.



12.1 GENERAL

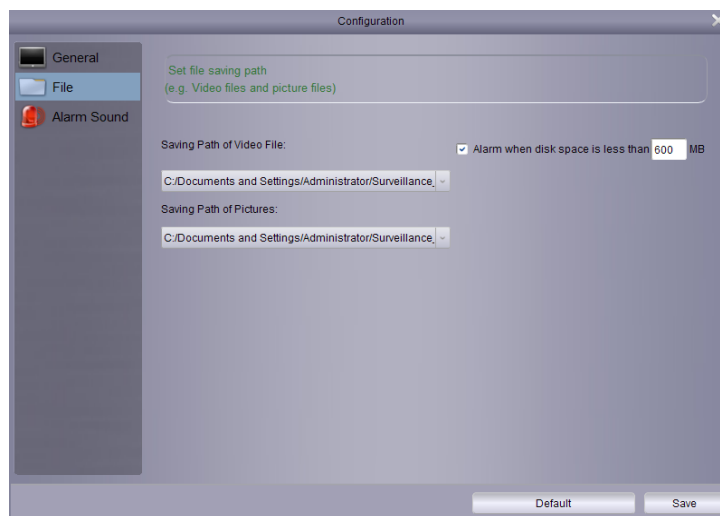


Configure general settings:

1. Configuration:

- Language: Select a language.
- Log Keeping Time: One week/Half month/One month.
- Enable audio on multiple channels simultaneously: Enable multi-channel audio output and play multi-channel audio.
- Enable auto-login: Automatically login without inputting account and password.
- Resume Live View Status: Open software and the last live view status will be automatically resumed.

2. Click Save to save the modification.



Set saving path of files (Video files and image files)

You can set an alarm message. When the disk space for saving files is less than the set space, the alarm message will appear. The default setting is 600MB.

Configure the folder for saving files:

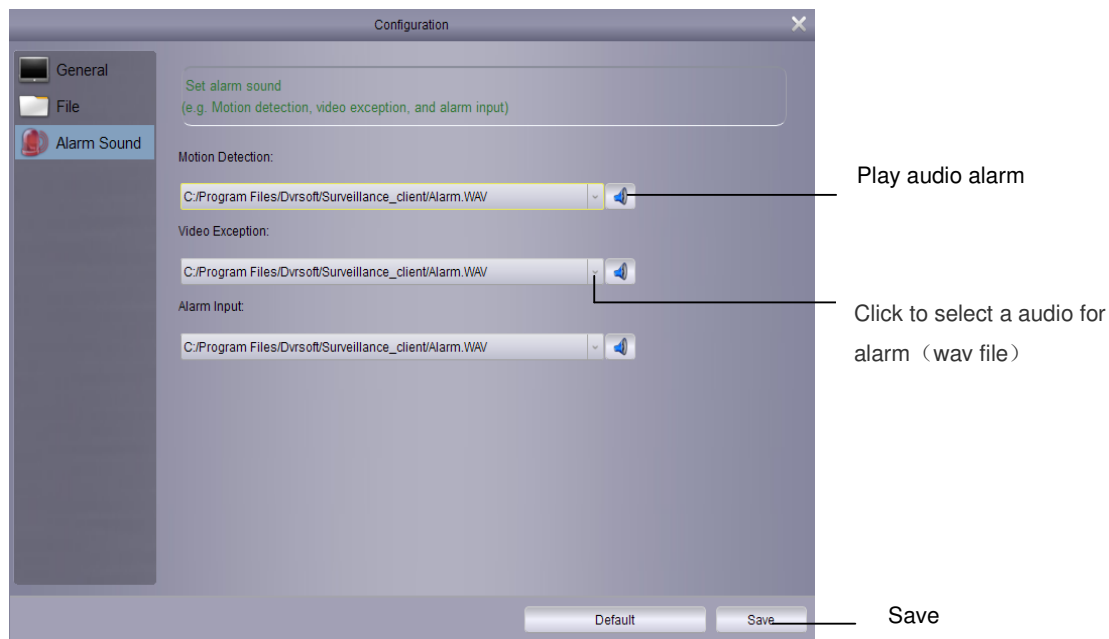
1. Click and select the required folder.
2. Click Save to save the changes.

Set alarm for insufficient disk space:

Alarm will appear if disk space is sufficient. When the disk space for saving is less than set space, the alarm will appear. The minimum value is 500MB.

12.3 ALARM SOUND

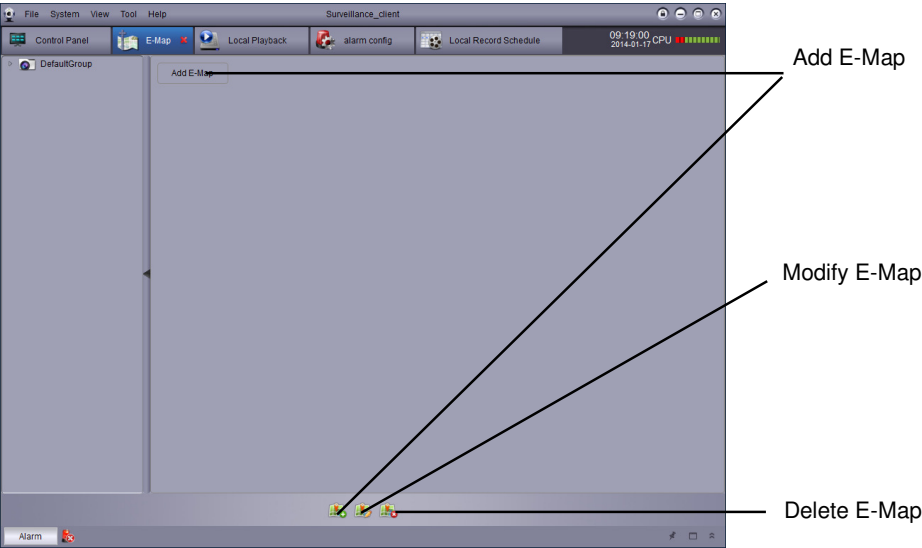
Customize alarm sound: Allow you to configure alarm sound. You may use any WAV file to be the alarm sound.



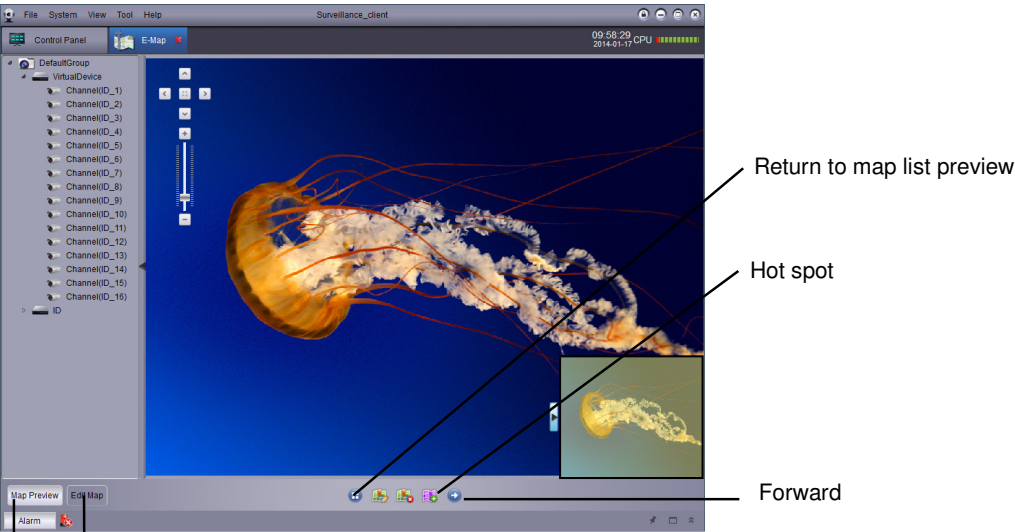
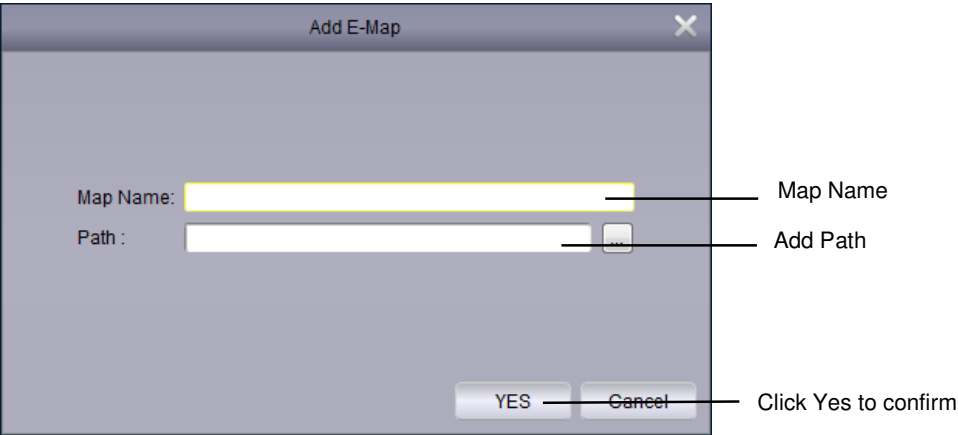
13 E-MAP

13.1 ADD E-MAP

1 Add, modify and delete E-Map



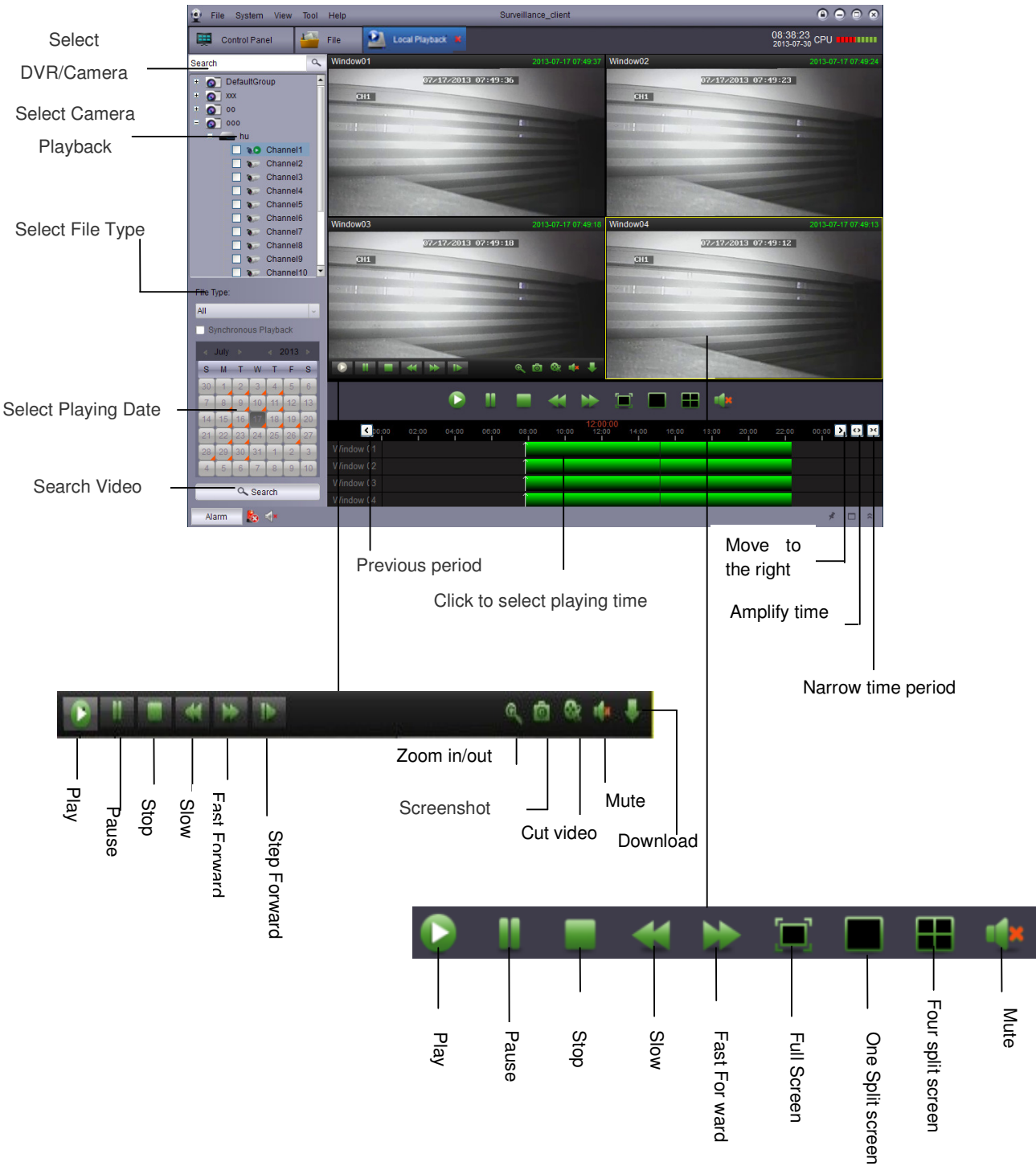
- 2 Click “Add-E-Map” to add map
- 3 Select the map to be modified and click Modify (to change the name and path of the map)
- 4 Select the map to be deleted and click Delete



Map Preview
Map Preview

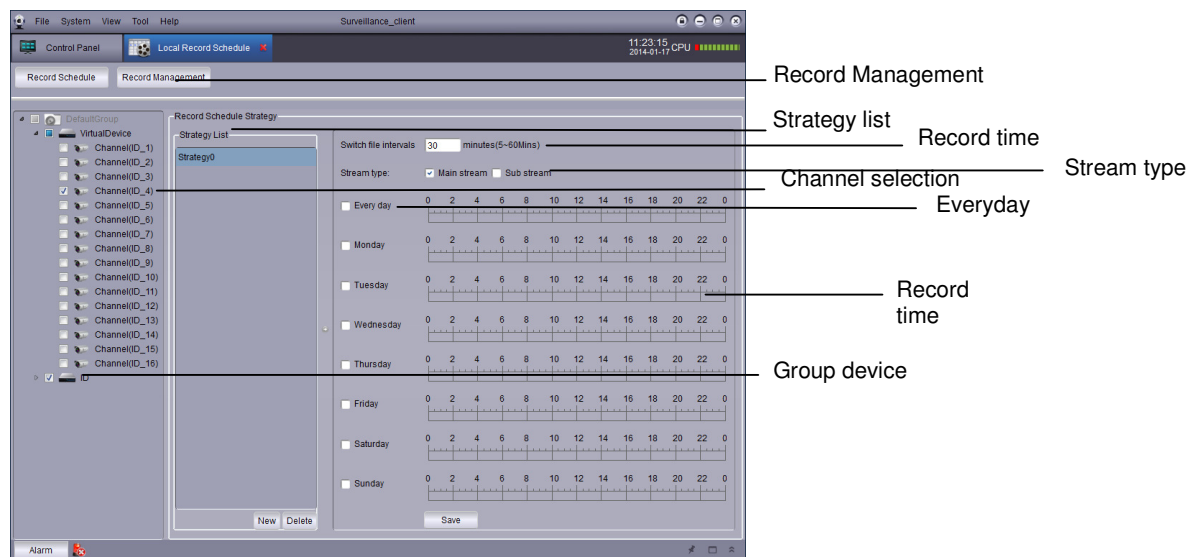
14 LOCAL PLAYBACK

14.1 LOCAL PLAYBACK



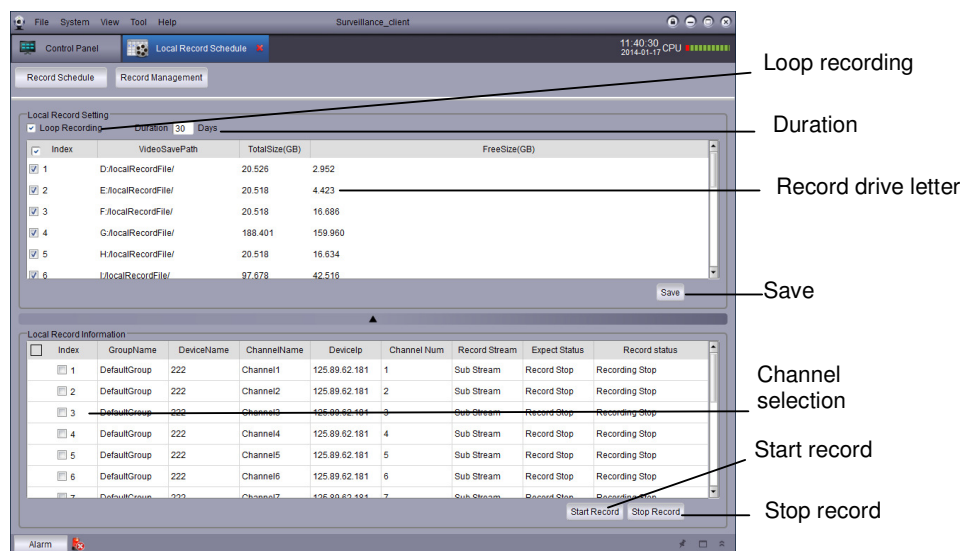
15 LOCAL RECORD SCHEDULE

15.1 RECORD SCHEDULE



- 1 Select the whole group device or select a channel
- 2 Select strategy 0 in the strategy list(you may create a new customized strategy)
- 3 Select record time (5-60 min)
- 4 Select stream type (Sub stream and Main stream)
- 5 Select Everyday or a single day or days
- 6 Select record time(by time period)
- 7 Click Save

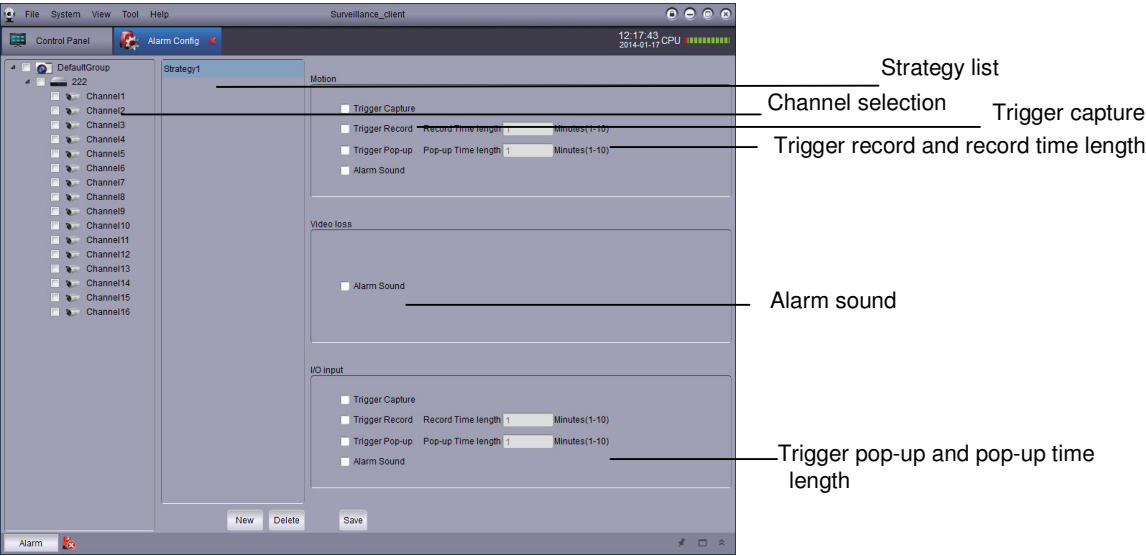
15.2 RECORD SETTING



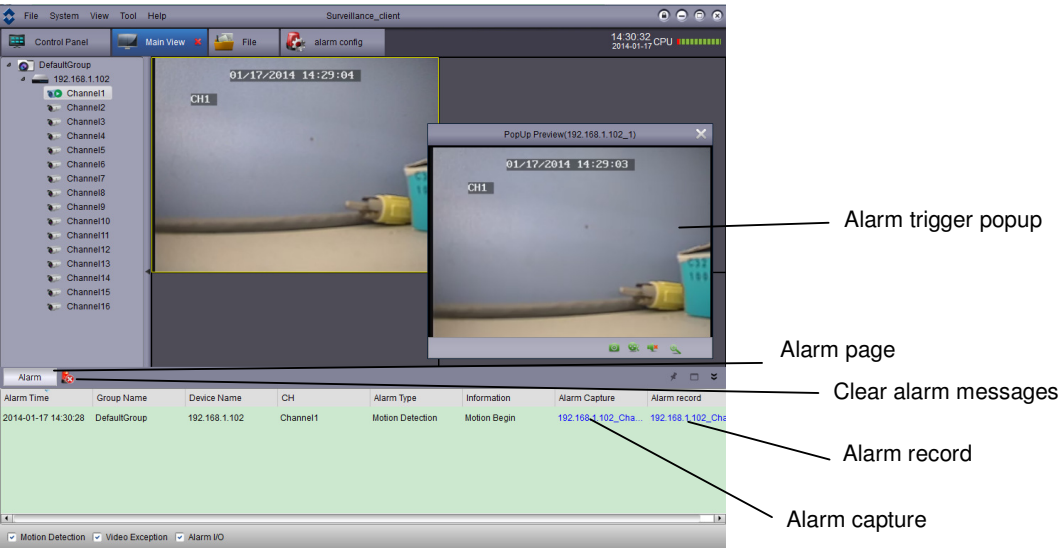
- 1 Select record drive letter (Select loop recording and duration as required)
- 2 Save drive letter
- 3 Select record channel
- 4 Start or stop recording

16 ALARM CONFIGURATION

16.1 ALARM CONFIGURATION



- 1 Alarm type: motion detection, video loss, I/O alarm
- 2 Select alarm record channels (single channel, multiple channels and select all)
- 3 Select capture
- 4 Select trigger record and record time length
- 5 Select trigger pop-up and pop-up time length
- 6 Select alarm sound



DS1093-126

URMET S.p.A.
10154 TORINO (ITALY)
VIA BOLOGNA 188/C
Telef. +39 011.24.00.000 (RIC.AUT.)
Fax +39 011.24.00.300 - 323



Area tecnica
servizio clienti +39 011.23.39.810
<http://www.urmet.com>
e-mail: info@urmet.com

MADE IN CHINA