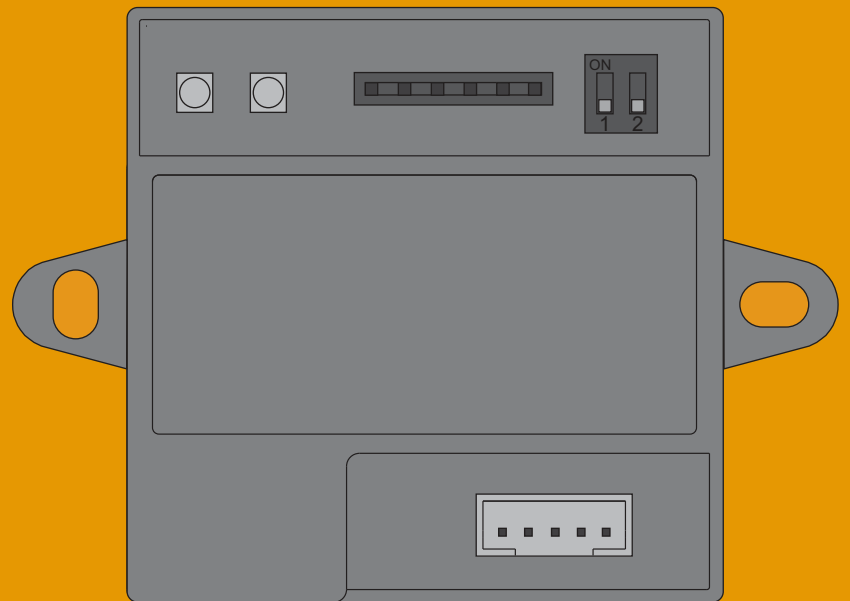


USER MANUAL

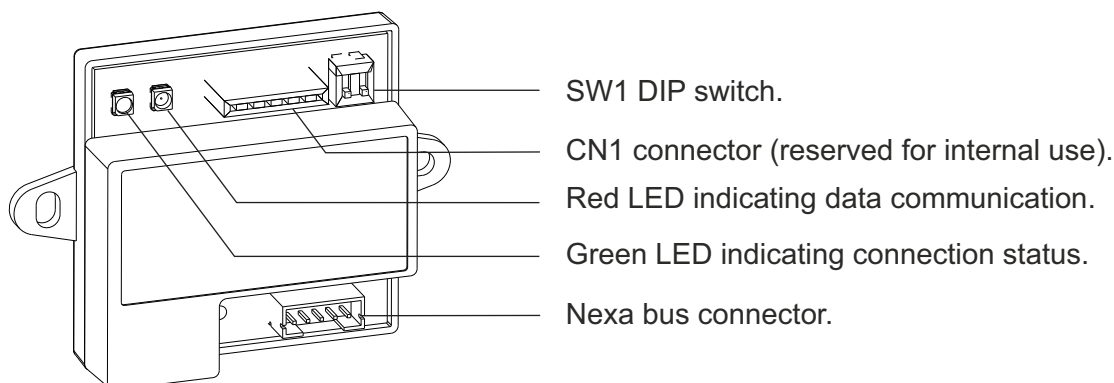


Digital Converter Module CD-NEXA/BT

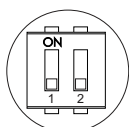


DESCRIPTION OF THE MODULE

Description of the CD-NEXA/BT module



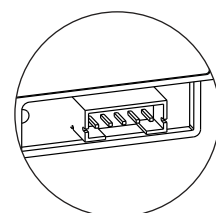
Description of the SW1 DIP switch:



For the CD-NEXA/BT module to operate properly, keep DIP switches 1 and 2 in the OFF position.

Description of the Nexa Bus link connector:

The Nexa Bus link connector is located at the bottom of the CD-NEXA/BT module. Connect the cable supplied with the module to connect with other modules by means of the Nexa bus, thereby providing the system with a wireless configuration interface. The following modules allow a wireless configuration:



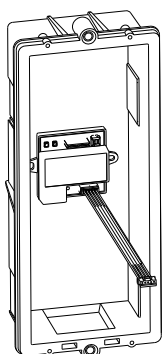
- ⇒ N3403/AL: Display module.
- ⇒ N3301/AL: Access control module and coded panel.

Description of the status LEDs:

Status	Green LED	Red LED
In standby.	Off	Off
Waiting for connection to be established.	Blinking	Off
Connection established.	Fixed	Off
Data transmission.	Fixed	Blinking

INSTALLATION OF THE MODULE

Positioning the CD-NEXA/BT module:



Position the CD-NEXA/BT module at the back of the embedding box, connect the link hose to the Nexa bus as shown in the drawing, then connect the other end of the hose to any of the free connectors of the bus of the N3403/AL, N3301/AL or EL3002 modules (if any). **Important:** For proper operation, avoid placing the module on a metal base.

OPERATION OF THE MODULE

Operation of the CD-NEXA/BT module

The CD-NEXA/BT module provides N3301/AL and N3403/AL modules with a wireless communication interface, thereby making it unnecessary to open the door panel to manage the phone book and programming parameters.

It is necessary to know the administrator code to connect the door panel to a PC by means of the module. To manage the door panel, it will be necessary to download the MEMEDIT 5 program from the documentation page <https://doc.golmar.es>. This program can be used to programme the door panel and back up installations to enable the restoring of devices whose memories, due to error or fault, have been damaged.

Operating states:

See the *Description of the status LEDs* section to differentiate each of the states.

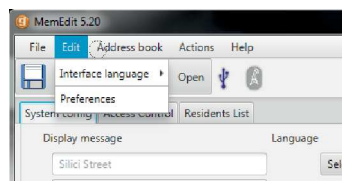
- **In standby:** The module will remain in standby mode whenever the door panel is not in programming mode or a disconnection has occurred and 15 seconds have elapsed.
- **Waiting for connection to be established:** The module will remain in this mode whenever the door panel is in programming mode. To access door panel programming mode, press the key button three times and then enter the administrator code.

Key + key + key + administrator code

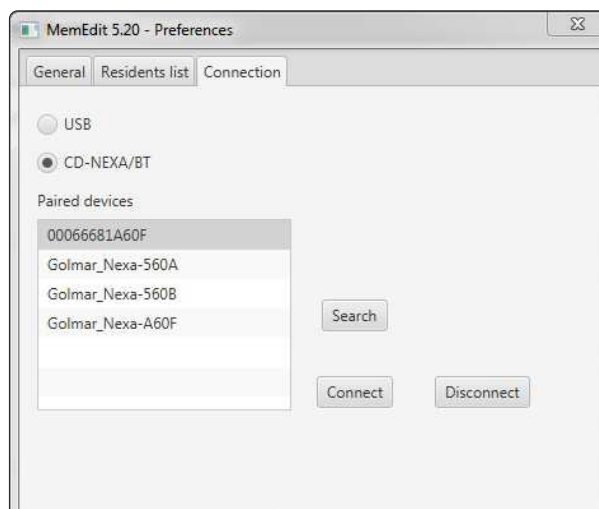


(*) Note the number of digits in the configured code (factory setting 2718 = 4 digits).

- **Connection established:** The module has successfully established connection with the PC. If the door panel features an N3403/AL module, the message CONNECTION RF will be displayed on the screen. In this state, it is possible to transmit data between the door panel and the PC, thereby enabling MEMEDIT 5 to be connected to the door panel. To establish a wireless connection with MEMEDIT 5, the module must be in the *Waiting for connection to be established* state as described in the previous section, then go to Edit > Preferences:



In the new window, go to the Connection tab and select the *Connection via CD-NEXA/BT* option:



Then press the Search button to show the device on screen, select it with the mouse and click Connect to establish connection with the module. If connection is successfully established, the preferences screen will automatically close and the wireless connection light will turn blue. From this moment, it will be possible to transmit data with the door panel.

Note: If a connection code is requested, use 2718.

- **Data transmission:** In this state, there is active communication between the CD-NEXA/BT connection module and the door panel.

Important: Do not press any keys on the door panel while data is being transferred between the door panel and the PC.



golmar@golmar.es
www.golmar.es

GOLMAR S.A.
C/ Silici, 13
08940- Cornellá de Llobregat
SPAIN



Golmar se reserva el derecho a cualquier modificación sin previo aviso.
Golmar se réserve le droit de toute modification sans préavis.
Golmar reserves the right to make any modifications without prior notice.